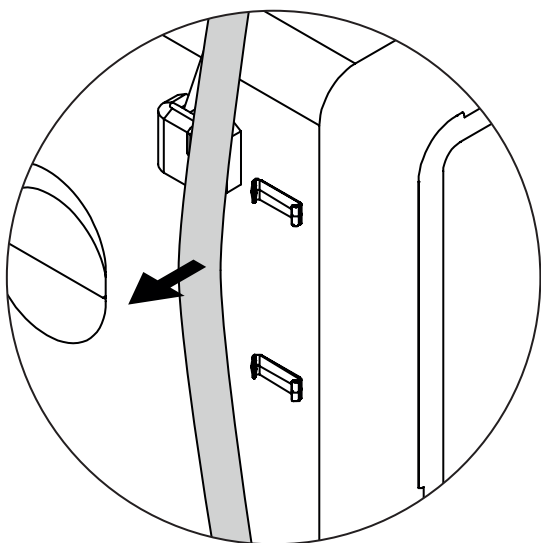
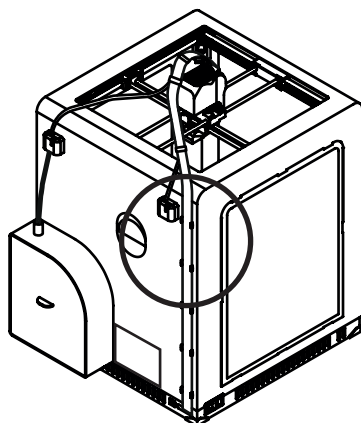
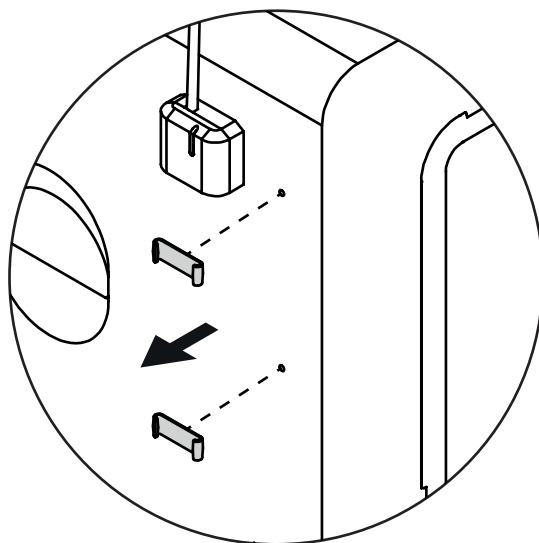


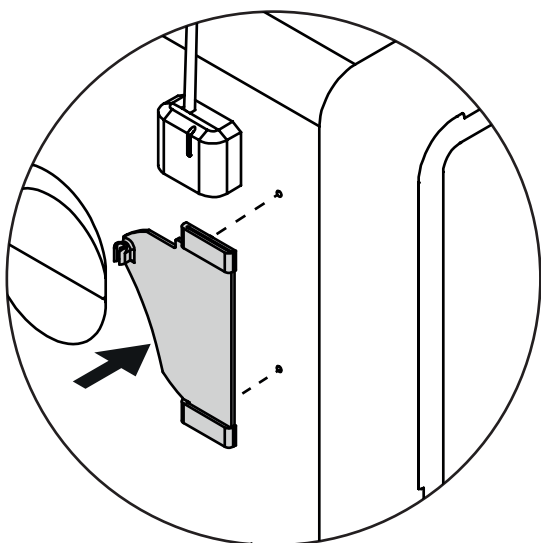
How to Install PTFE Tube with Adapter in M300 Dual



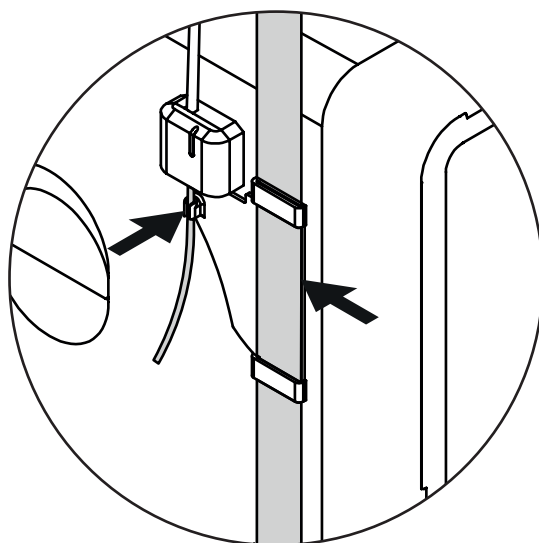
1 | Remove the extruder cable from the clamps at the back of the printer.



2 | Remove the clamps from the printer's housing.



3 | Install the Adapter with the PTFE Tube in the printer's housing.



4 | Insert the extruder cable into the adapter and insert the PTFE tube into the material endstop. Make sure that the tube and cable are connected at a right angle.