

X/Y Axis Motor Replacement

SOURCE:

<https://support.zortrax.com/xy-axis-motor-replacement/>

Table Of Contents

Unplugging the Power Cable
Unplugging the Motor Cable
Unscrewing the Axis Motor
Axis Motor Removal
Axis Motor Assembly, part 1
Axis Motor Assembly, part 2
Securing the Axis Motor
Plugging the Motor Cable
Plugging the Power Cable

The X/Y axis motor is responsible for the extruder's movement along the guide rails. Therefore, if the extruder in your printer does not move at all or it moves with difficulties and makes unusual noises, or your models has shifted layers, at first you should check if the short and long belts are tense and the screws on the motor pulley and axes pulleys are tightened. More instructions on maintenance work connected with axes can be found in this [article](#). If carrying out maintenance work does not help, the X/Y axis motor needs to be replaced. Follow the steps from this manual to replace the motor.

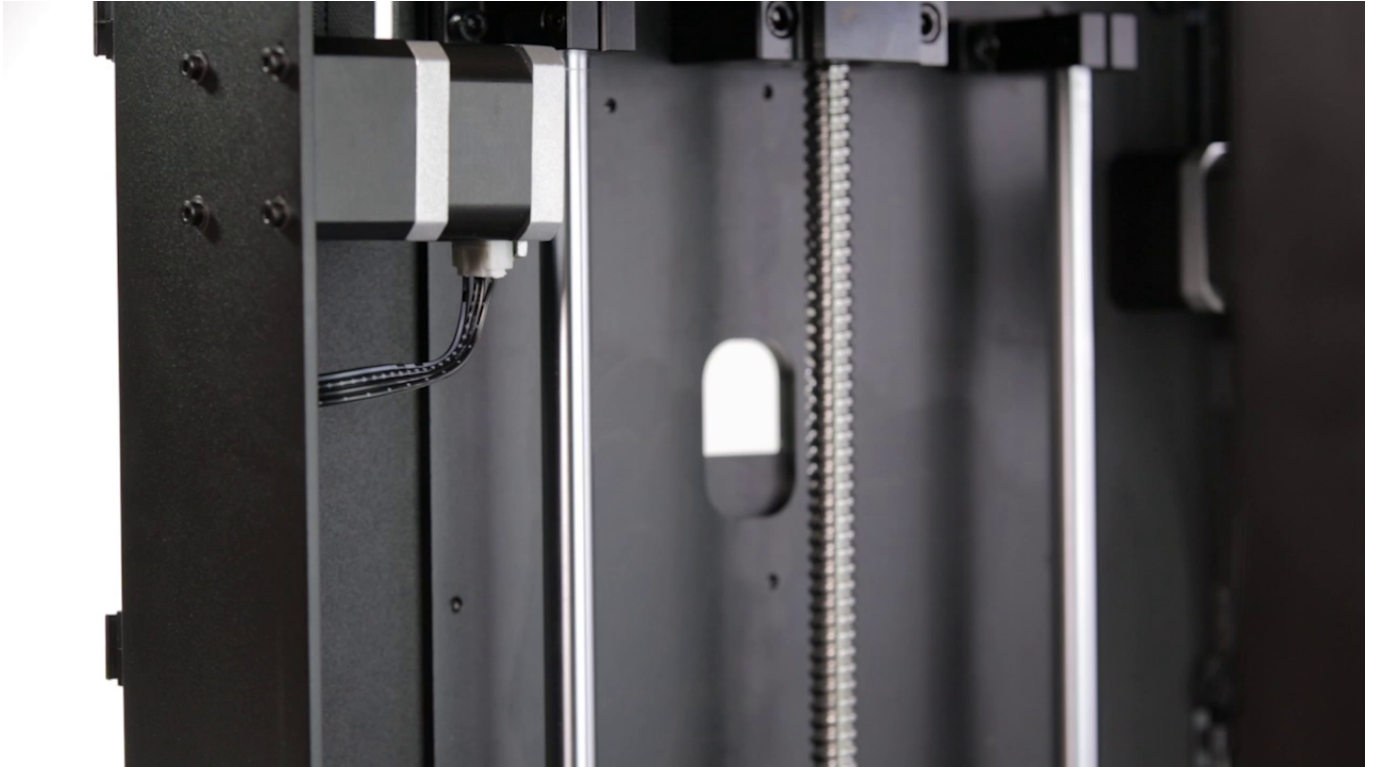
The following manual shows the M200 repair work. For the M300, these procedures are the same.

Unplugging the Power Cable



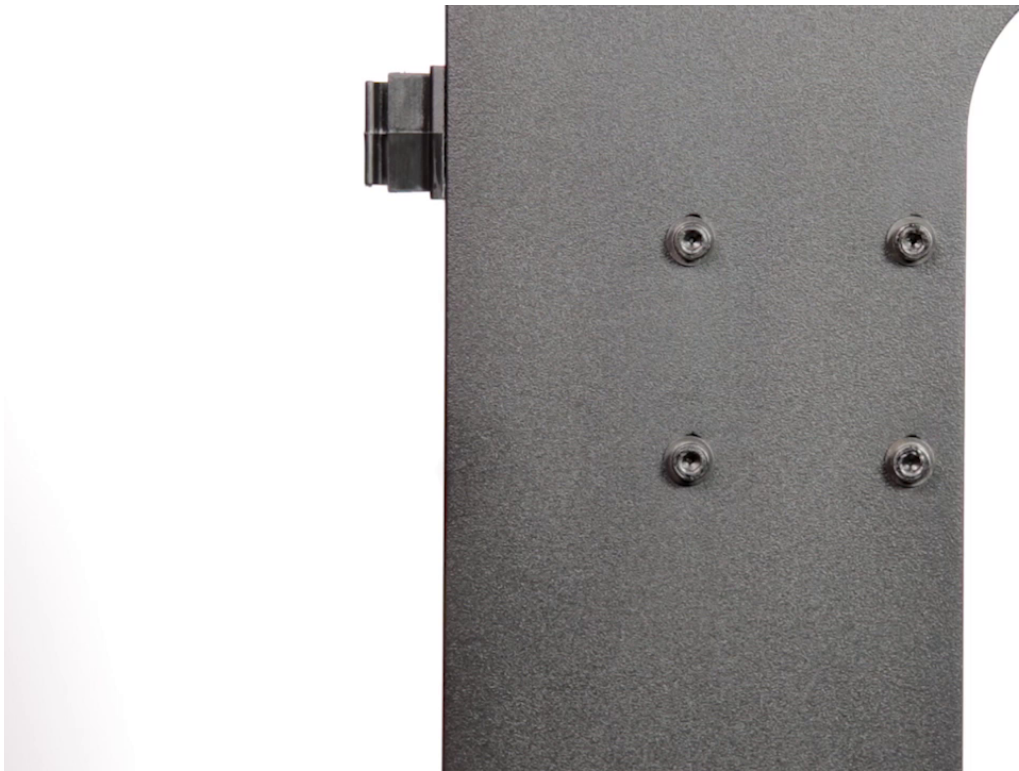
Turn off the printer and unplug the power cable.

Unplugging the Motor Cable



Unplug the motor cable.

Unscrewing the Axis Motor



Unscrew the four screws that secure the motor.

Axis Motor Removal



Remove the distance piece and remove the motor.

Axis Motor Assembly, part 1



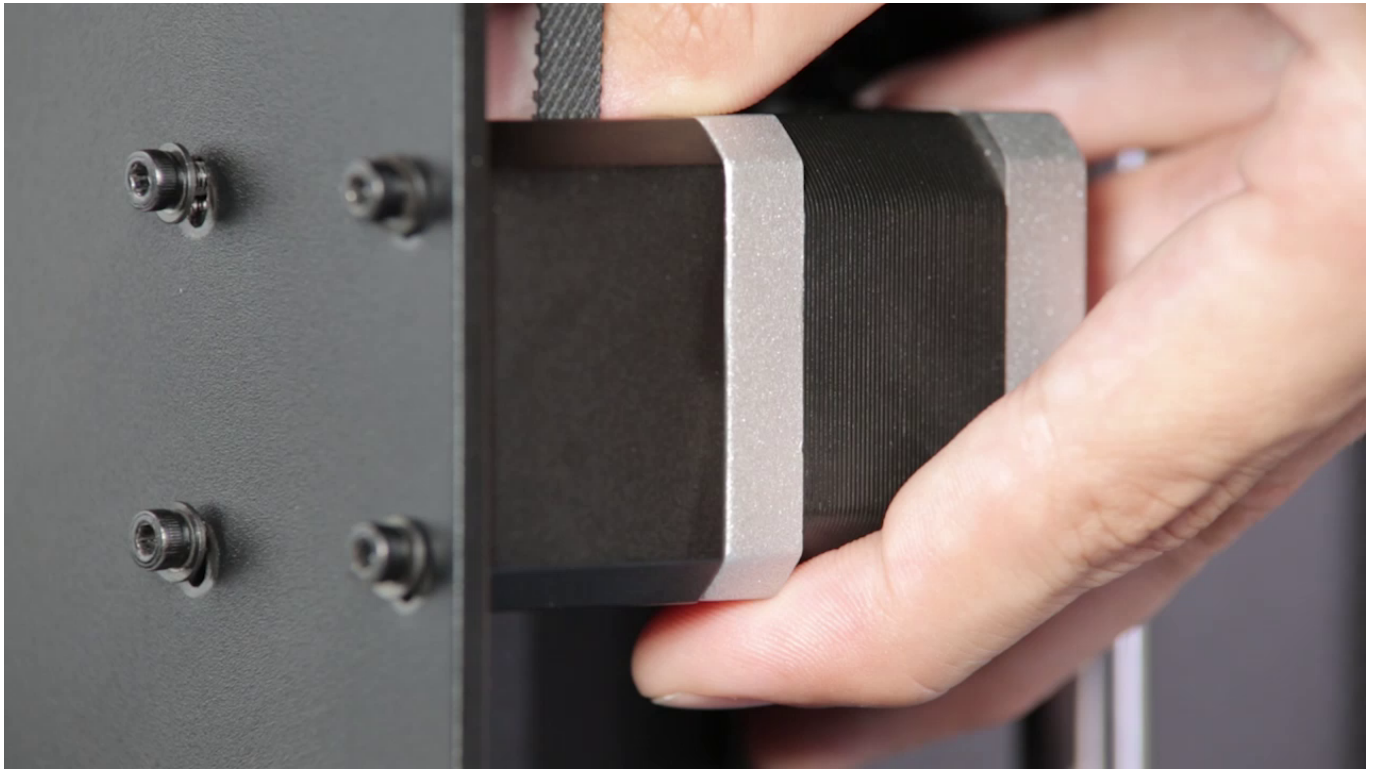
Put the belt on the new motor pulley and install the motor distance piece.

Axis Motor Assembly, part 2



Insert the four screws into the holes in the housing and tighten them slightly.

Securing the Axis Motor



Press down the motor by hand to tense up the belt. Tighten the screws while the motor is still being pressed down.

Plugging the Motor Cable



Plug the motor cable in.

Plugging the Power Cable



Plug the power cable in.