

FEP Film Replacement

SOURCE:

<https://support.zortrax.com/inkspire-fep-film-replacement/>

Table Of Contents

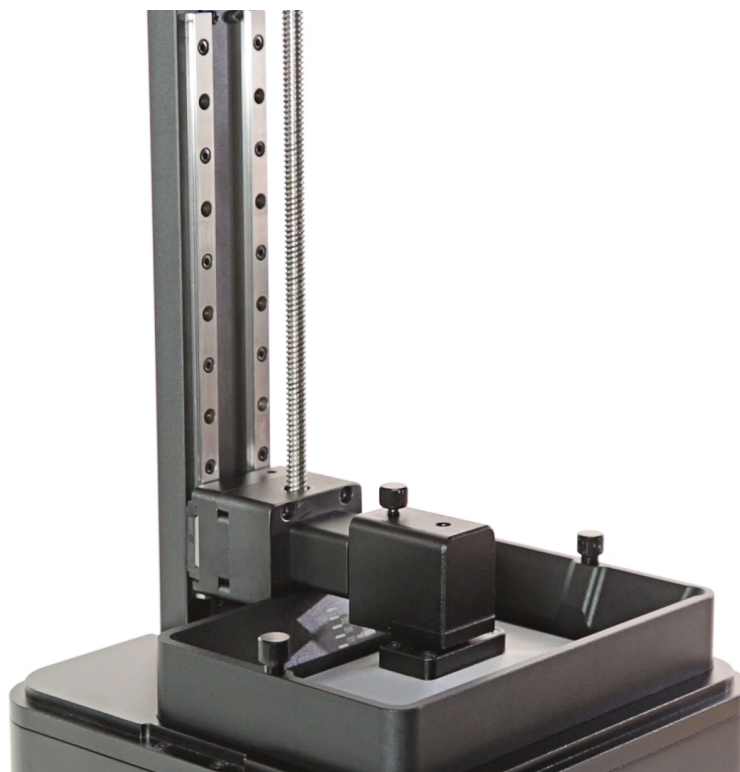
UV Cover Removal
Lifting up the Platform
Unplugging the Power Cable
Resin Tank Removal
FEP Film Rack Removal
Unscrewing the FEP Film Rack
FEP Film Removal
FEP Film Rack Cleaning
FEP Film Installation
Securing the FEP Film Rack, part 1
FEP Film Rack Installation
Securing the FEP Film Rack, part 2
Excess FEP Film Removal
FEP Film Cleaning
Resin Tank Installation
UV Cover Installation

UV Cover Removal



Remove the UV cover.

Lifting up the Platform



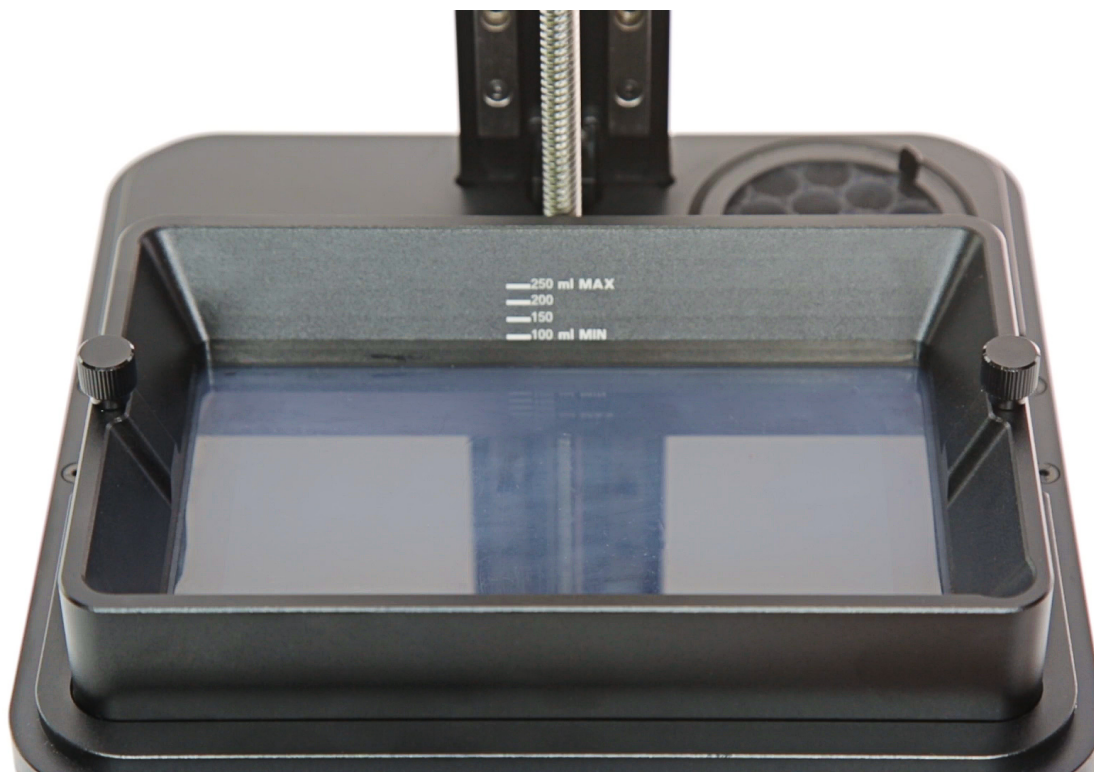
From the menu, select “Tools,” “Platform” and “Move the platform.” Keep the UP arrow pressed to lift the platform.

Unplugging the Power Cable



Turn off the printer and unplug the power cable.

Resin Tank Removal



Loosen the two screws that secure the resin tank. Next, remove the tank.

FEP Film Rack Removal



Unscrew the black screws that secure the FEP film rack to the resin tank. Next, separate the FEP film rack from the resin tank.

Unscrewing the FEP Film Rack



Unscrew the silver screws that secure the two parts of the FEP film rack.

FEP Film Removal



Separate both parts of the rack and remove the FEP film.

FEP Film Rack Cleaning



Clean both parts of the FEP film rack with a paper towel soaked in isopropyl alcohol.

FEP Film Installation



Place the new FEP film between the two parts of the FEP film rack.

The **new** FEP film does not require unfolding after taking it out of the packaging.

Securing the FEP Film Rack, part 1



In order for the FEP film to be properly tight, you have to create a bulge while securing both parts of the FEP film rack. To do that, place the FEP replacement jig from the Starter Kit or an item that is 8 mm [0.3 in] thick underneath the film. Next, slightly tighten the silver screws in a diagonal order. Once the assembly of the FEP film rack is finished, fully tighten all the screws.

Remember to press the rack while securing each screw to keep the bulge in the FEP film.

FEP Film Rack Installation



Put the FEP film rack and the resin tank together.

Securing the FEP Film Rack, part 2



Secure the FEP film rack with the black screws in a diagonal order. Once you finish, fully tighten all screws.

Excess FEP Film Removal



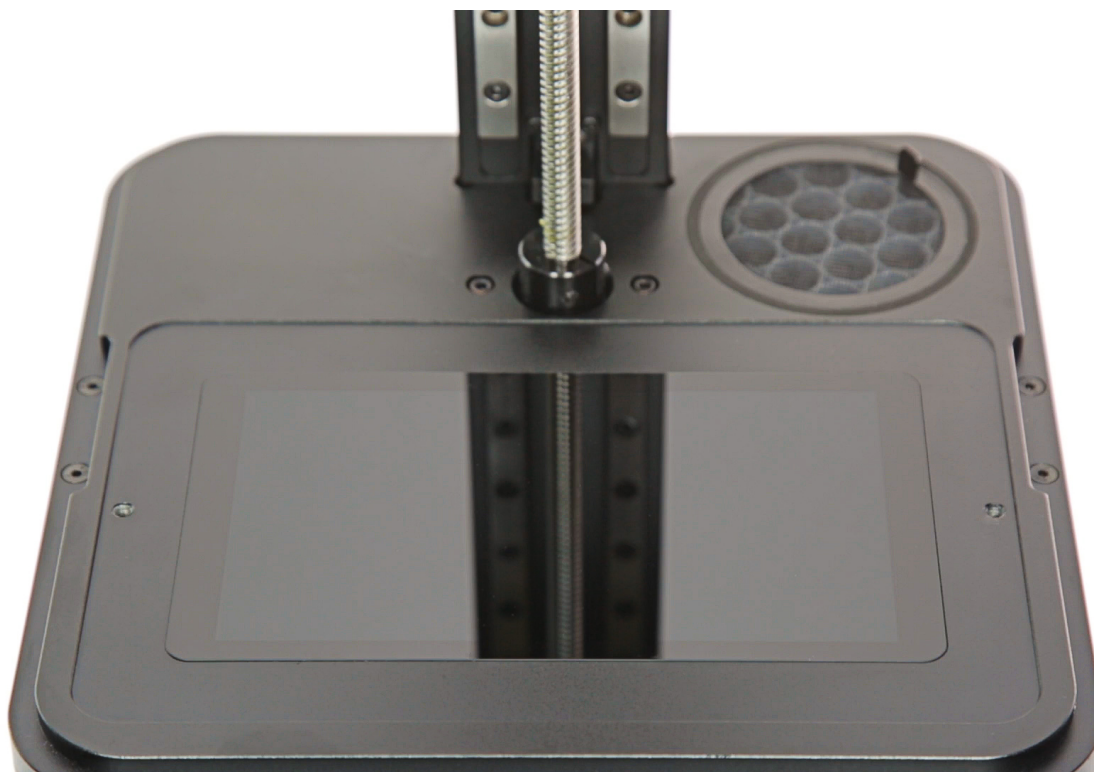
Cut and remove the excess FEP film from the rack.

FEP Film Cleaning



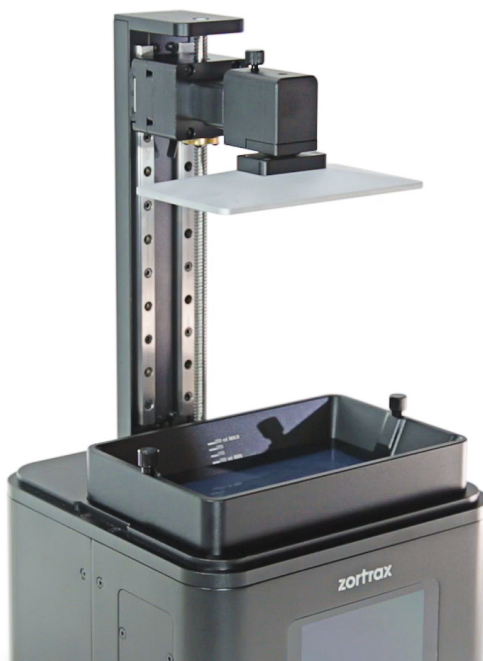
Clean the outside of the FEP film and the LCD screen with a paper towel soaked in isopropyl alcohol before installing the resin tank in the printer.

Resin Tank Installation



Install the resin tank in its place and tighten the two screws.

UV Cover Installation



Install the UV cover on the printer.