

LCD Screen Replacement

SOURCE:

<https://support.zortrax.com/lcd-screen-replacement/>

Table Of Contents

UV Cover Removal
Lifting up the Platform
Unplugging the Power Cable
Unscrewing the Inspection Hatch Cover
Unplugging the LCD Screen Cable
Resin Tank Removal
LCD Screen Removal
LCD Screen Installation
Resin Tank Installation
Plugging the LCD Screen Cable
Securing the Inspection Hatch Cover

UV Cover Removal



Remove the UV cover.

Lifting up the Platform



From the menu select “Tools,” “Platform” and “Move the platform.” Keep the UP arrow pressed to lift the platform.

Unplugging the Power Cable



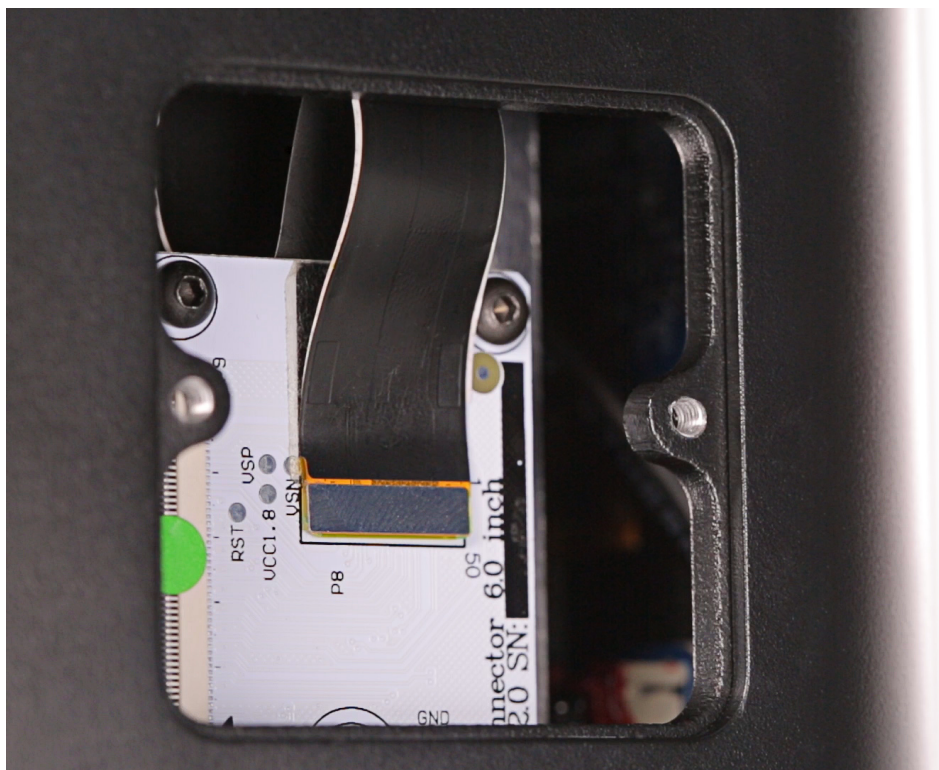
Turn off the printer and unplug the power cable.

Unscrewing the Inspection Hatch Cover



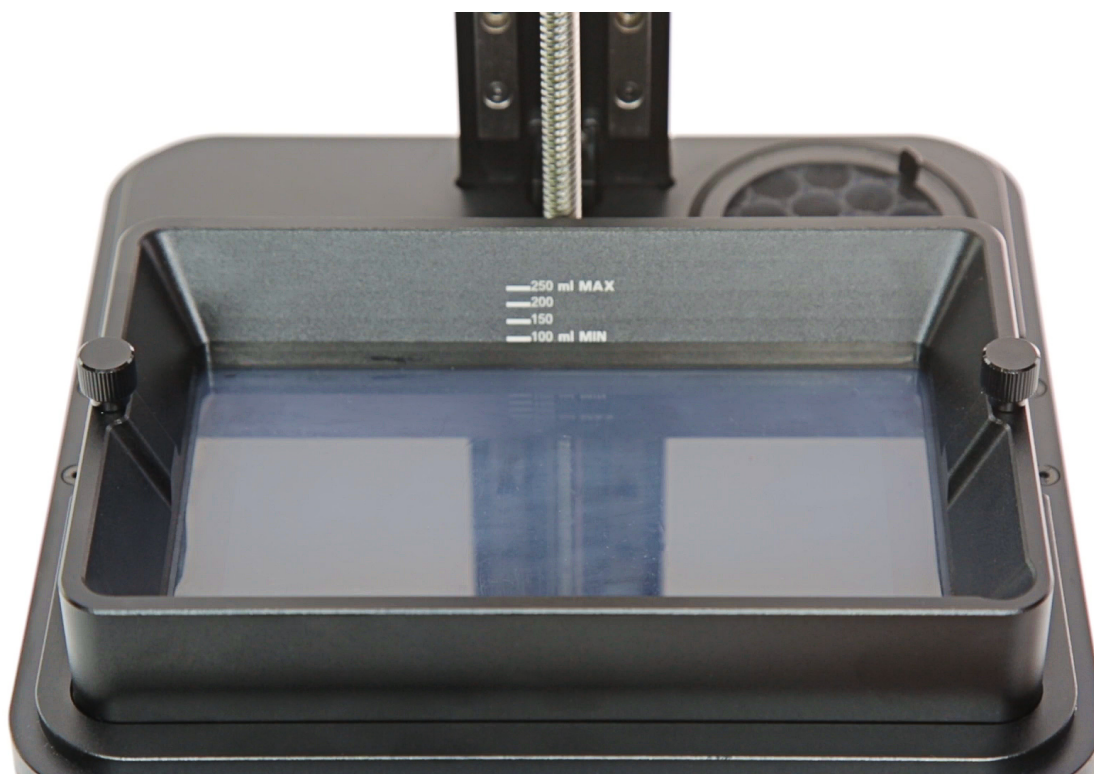
Unscrew the two screws that secure the inspection hatch cover. Next, remove the cover using the adhesive piece.

Unplugging the LCD Screen Cable



Use tweezers to unplug the LCD screen cable from the PCB.

Resin Tank Removal



Loosen the two screws that secure the resin tank. Next, remove the tank.

LCD Screen Removal



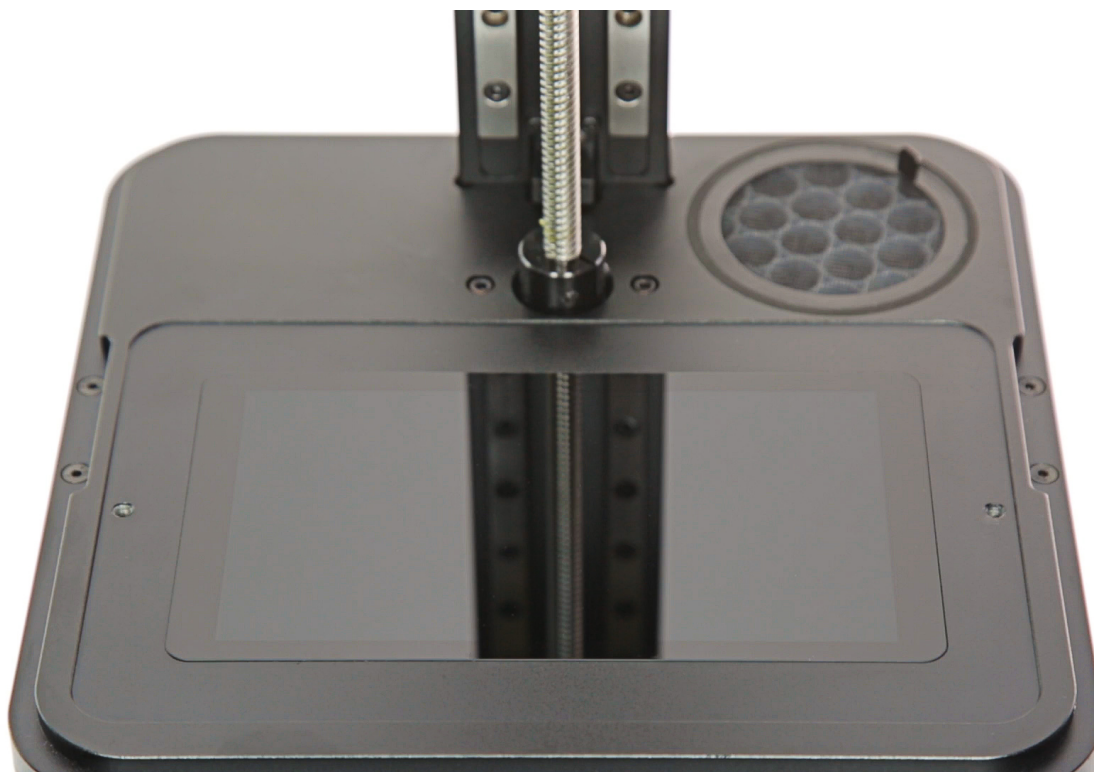
Stick both adhesive pieces to the left side of the LCD screen and pull them upwards to lift the LCD screen. Remove the LCD screen cable from the slot in the housing and remove the screen.

LCD Screen Installation



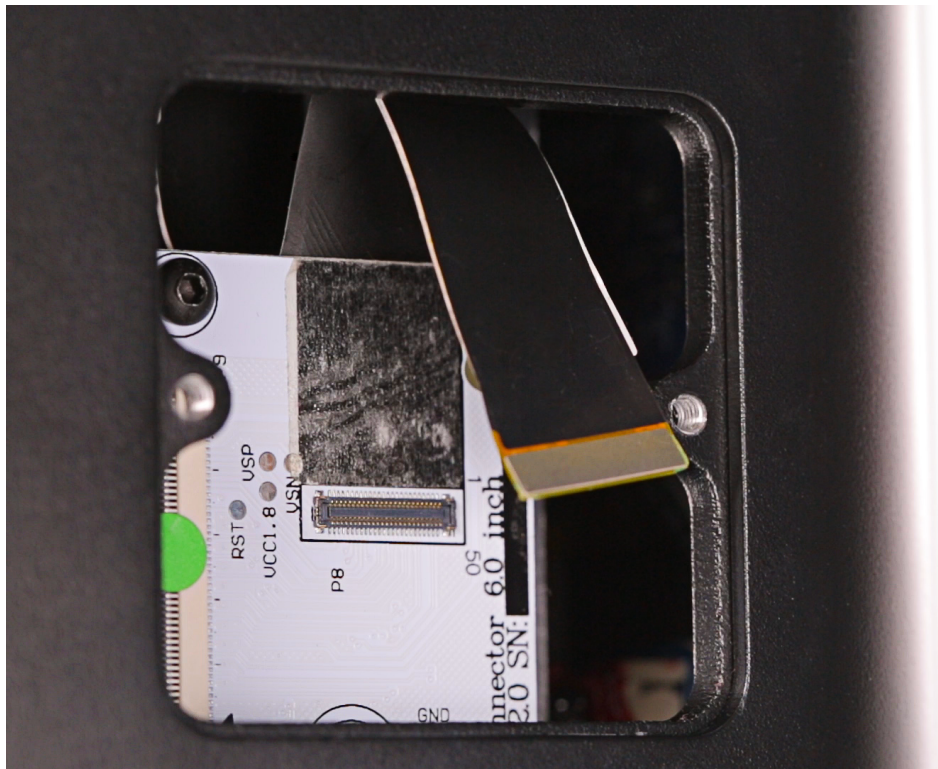
Carefully remove the protective foils from the new LCD screen. Next, pass the screen cable through the slot in the housing. Use tweezers to take out the cable from behind the PCB. Install the screen in its place.

Resin Tank Installation



Install the resin tank in its place and tighten the two screws.

Plugging the LCD Screen Cable



Plug the LCD screen cable into the PCB.

Securing the Inspection Hatch Cover



Install the inspection hatch cover in its place and secure it with the two screws.