

Troubleshooting: Camera Preview Is Blurred

SOURCE:

<https://support.zortrax.com/troubleshooting-camera-preview-blurred/>

Table Of Contents

Blurry Camera View
Unscrewing the Camera
Removing the Camera (from the Frame)
Unscrewing the Camera's Cover
Removing the Camera's Case
Recalibrating the Camera's Focus
Camera Installation, part 1
Securing the Camera's Cover
Camera's Installation, part 2
Securing the Camera
Sharp Camera View

Blurry Camera View

3D Printers > 192.168.11.190



192.168.11.190 Zortrax M200 Plus (192.168.11.190) ↗

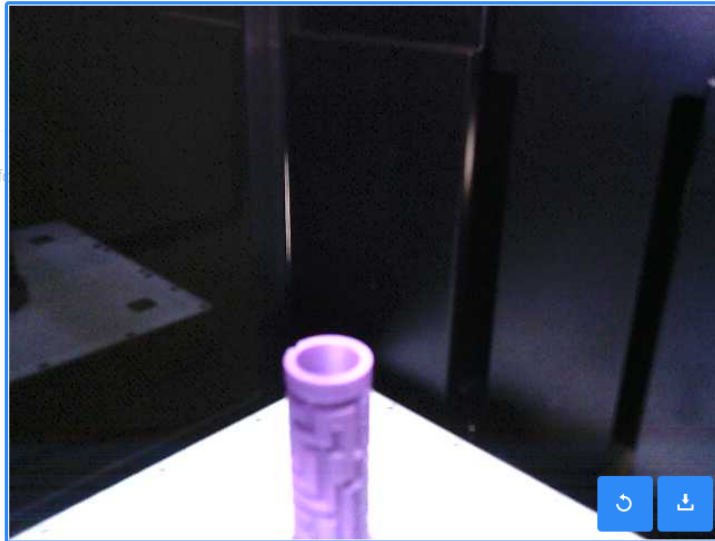
READY TO PRINT

Last used material:

SEND AND PRINT

CAMERA PREVIEW

FORGET THE PRINTER



BASIC INFORMATION

Basic info

3D PRINTER FILES

200x180 mm

10 microns

m

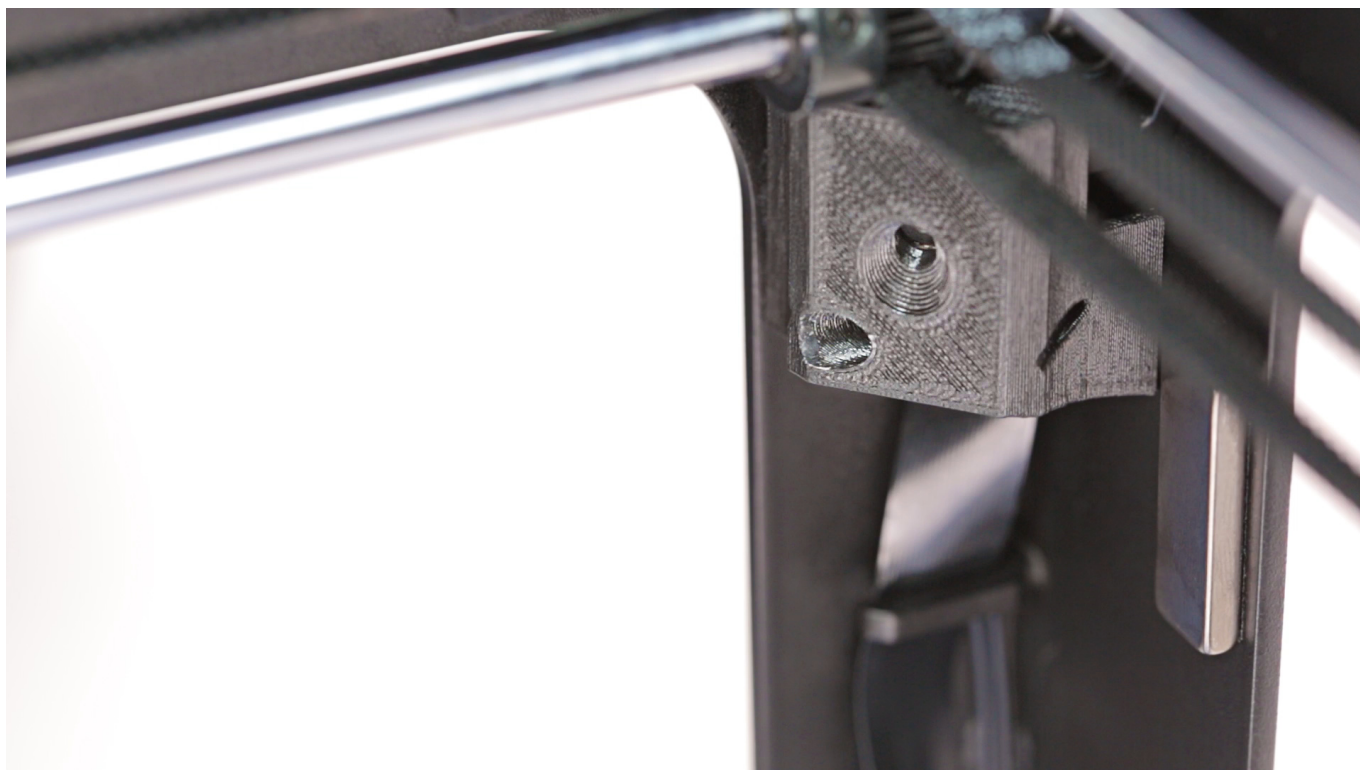
S, Z-GLASS, Z-HIPS, Z-PCABS, Z-PETG,
FRAT, Z-ESD, Z-PLA Pro, Z-ASA Pro,
MIFLEX

anically removed

To see the preview from the printer's camera, open Z-SUITE 2 and go to *My Devices* panel. Select your printer (it should be connected to a local network) and click *Camera Preview*.

If the preview in your printer is out of focus, follow the steps from this manual to adjust focus to the proper point.

Unscrewing the Camera



Unscrew one screw that secures the camera in the printer's frame. Use a 2mm Allen key.

Removing the Camera (from the Frame)



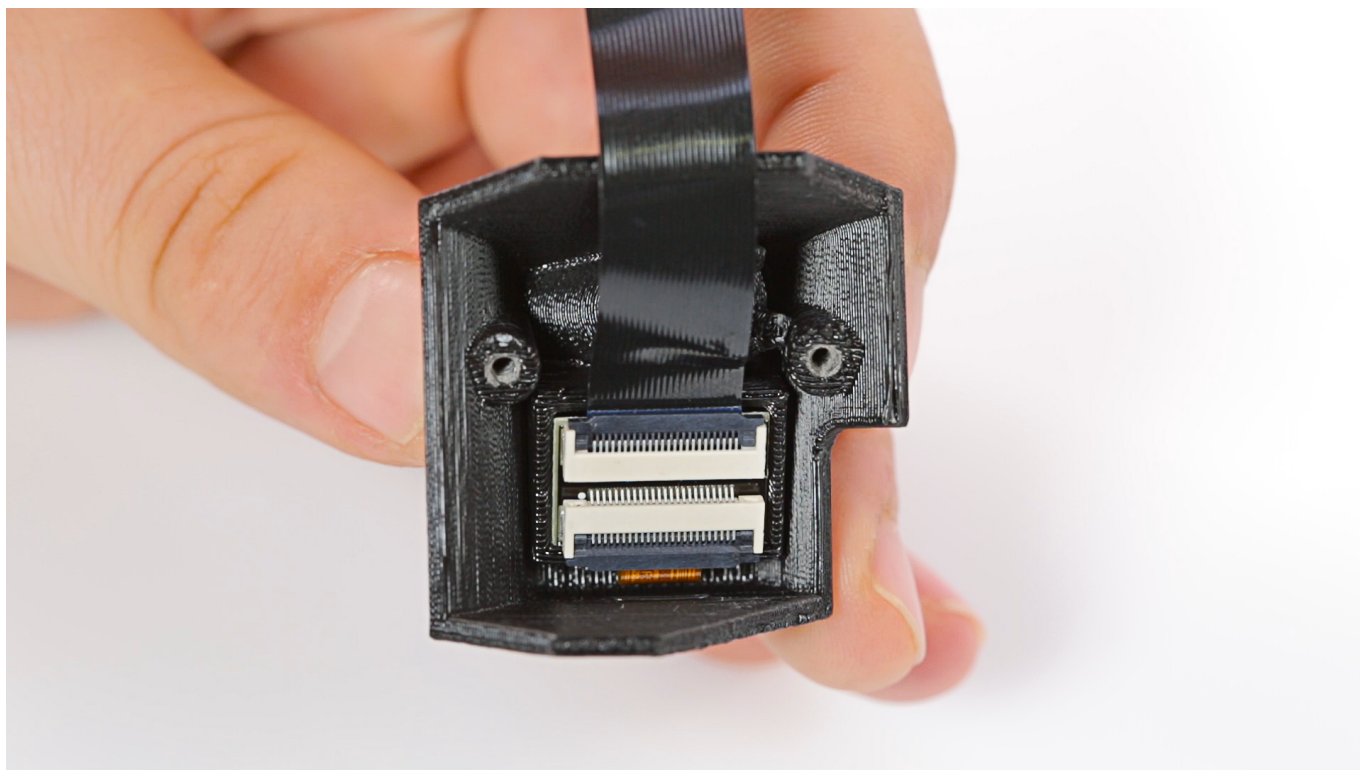
Remove the camera together with its cable from the printer's frame.

Unscrewing the Camera's Cover



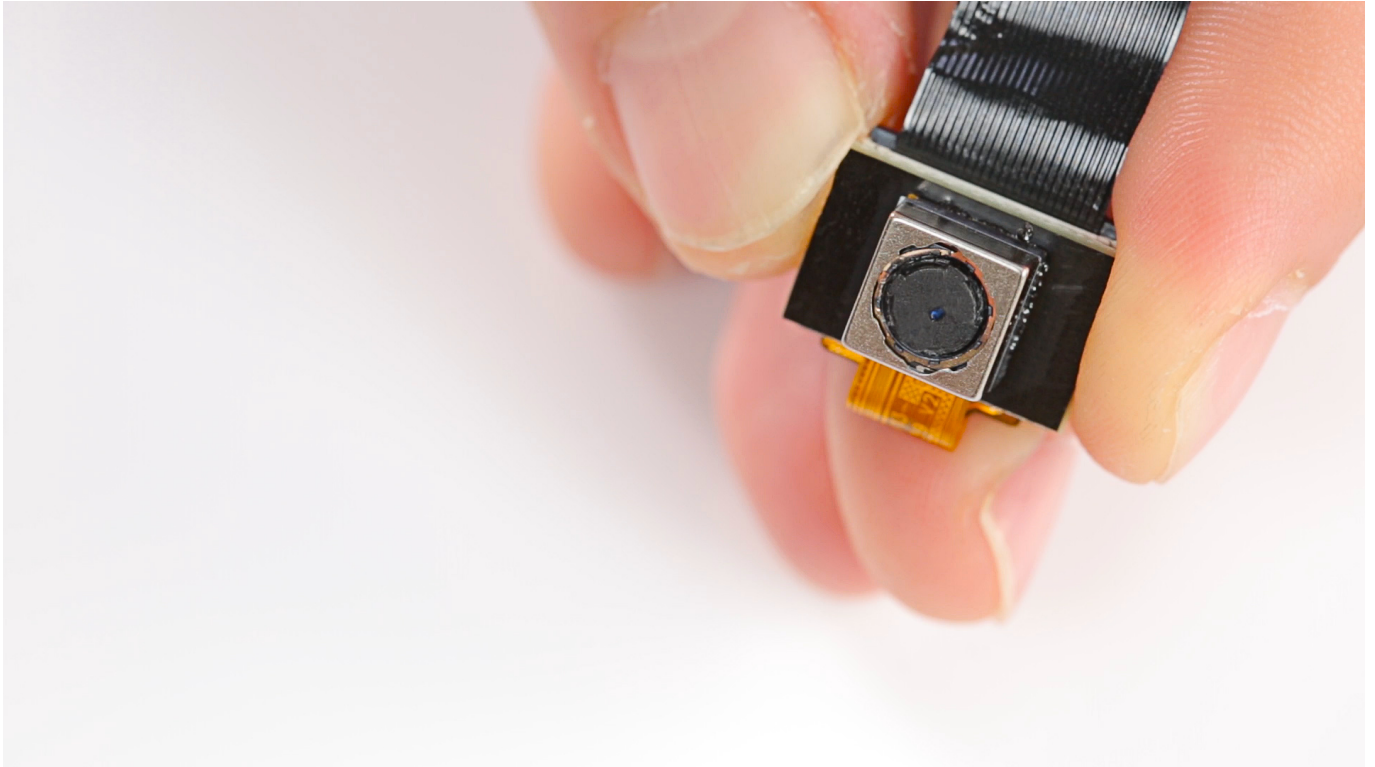
Unscrew the two screws that secure the camera's back cover. Use a Phillips screwdriver.

Removing the Camera's Case



Separate the camera from its printed case.

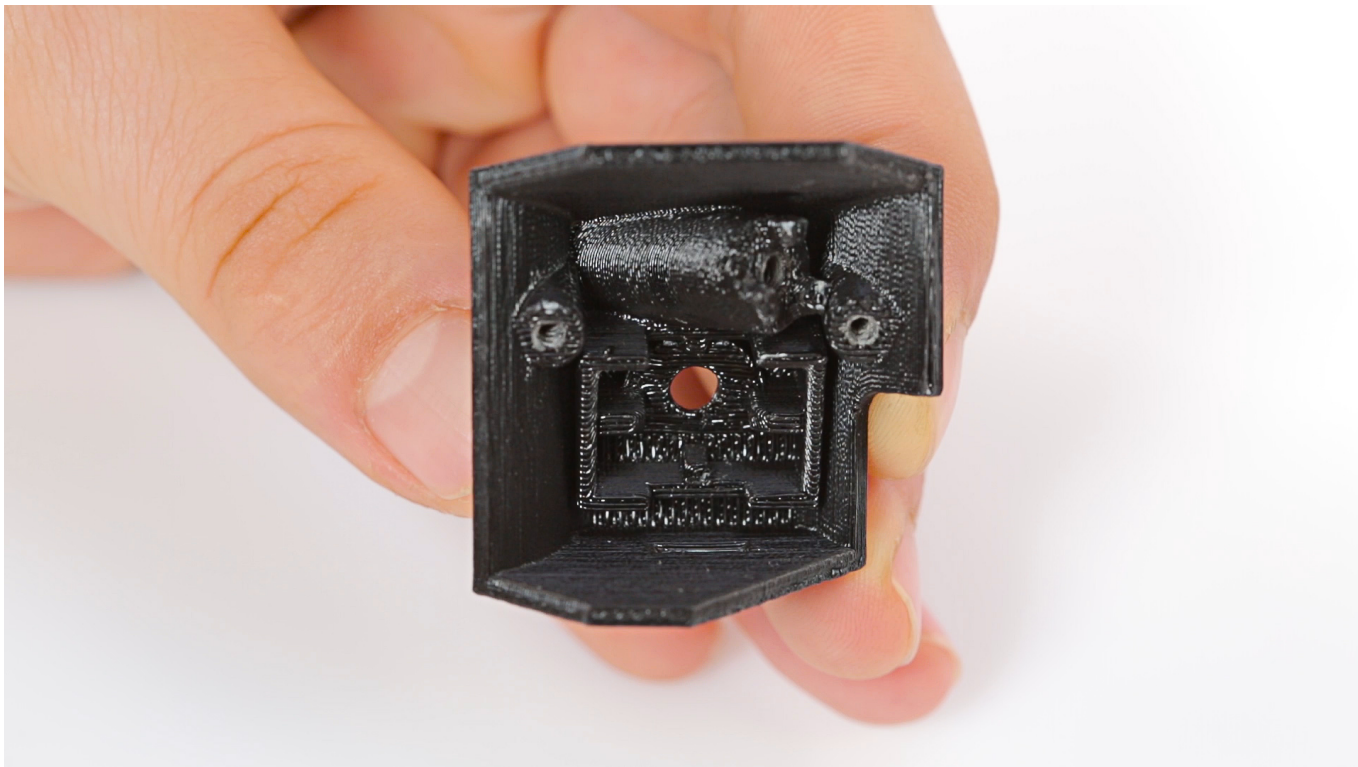
Recalibrating the Camera's Focus



Use tweezers and twist the camera's lens.

To control focus in the camera, twist the lens either clockwise (if focus is set too far from the camera) or counterclockwise (if focus is set too close to the camera).

Camera Installation, part 1



Put the camera back in its printed case.

Securing the Camera's Cover



Secure the camera's back cover with the two screws.

Camera's Installation, part 2



Install the camera with its cable in the printer's frame.

Securing the Camera



Secure the camera to the printer's frame with the screw.

Sharp Camera View

3D Printers > 192.168.11.190



192.168.11.190 Zortrax M200 Plus (192.168.11.190) ↩

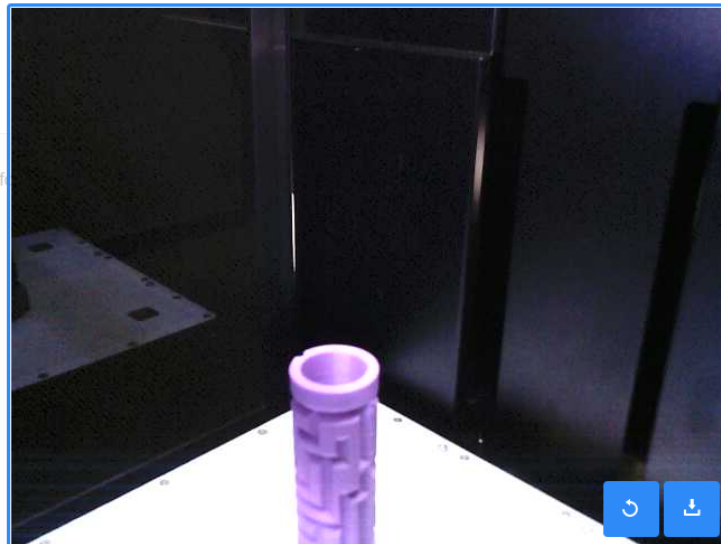
READY TO PRINT

Last used material:

SEND AND PRINT

CAMERA PREVIEW

FORGET THE PRINTER



BASIC INFORMATION

Basic info

3D PRINTER FILES

200x180 mm

10 microns

mm

PLA, Z-GLASS, Z-HIPS, Z-PCABS, Z-PETG,
FRAT, Z-ESD, Z-PLA Pro, Z-ASA Pro,
MIFLEX

Manually removed

Once you complete the following procedure, camera focus should be set properly and the preview should look like, for example, the one in the picture.