

# **Z-Axis Cover Replacement**

SOURCE:

<https://support.zortrax.com/z-axis-cover-replacement/>

## Table Of Contents

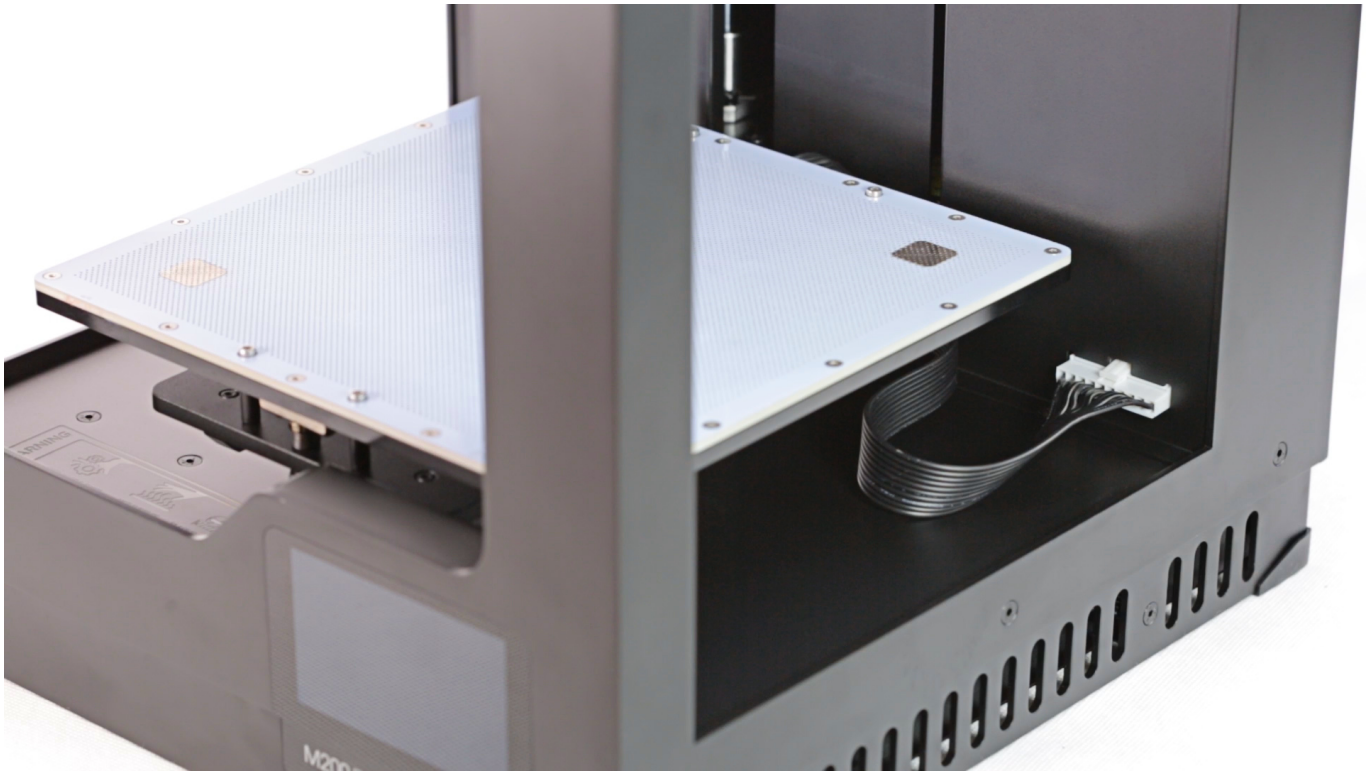
|  |  |
|--|--|
| Unplugging the Power Cable                           |  |
| Unplugging the Heatbed Cable (from the Z-Axis Cover) |  |
| Platform Removal                                     |  |
| Unscrewing the Z-Axis Cover, part 1                  |  |
| Unscrewing the Z-Axis Cover, part 2                  |  |
| Z-Axis Cover Removal                                 |  |
| Z-Axis Cover Installation                            |  |
| Securing the Z-Axis Cover, part 1                    |  |
| Securing the Z-Axis Cover, part 2                    |  |
| Platform Installation                                |  |
| Plugging the Heatbed Cable (into the Z-Axis Cover)   |  |
| Plugging the Power Cable                             |  |

## Unplugging the Power Cable



Turn off the printer and unplug the power cable.

## Unplugging the Heatbed Cable (from the Z-Axis Cover)



Unplug the heatbed cable from the Z-axis cover.

## Platform Removal



Remove the platform with the heatbed cable from the printer.

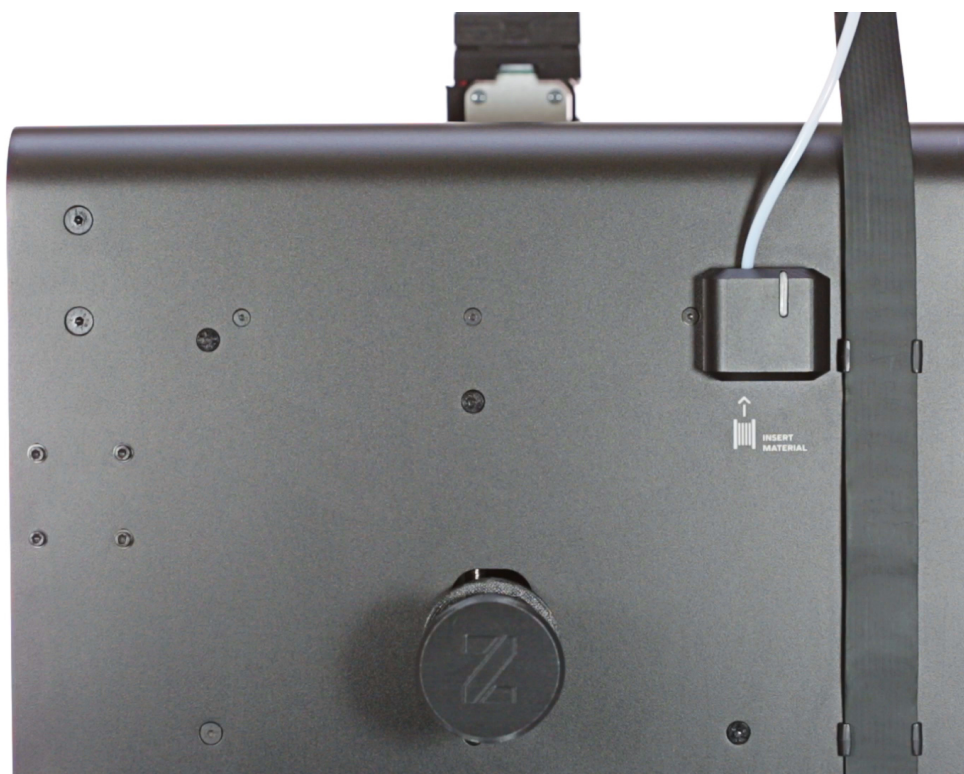
## Unscrewing the Z-Axis Cover, part 1



Unscrew the screw that secures one part of the Z-axis cover inside the printer.

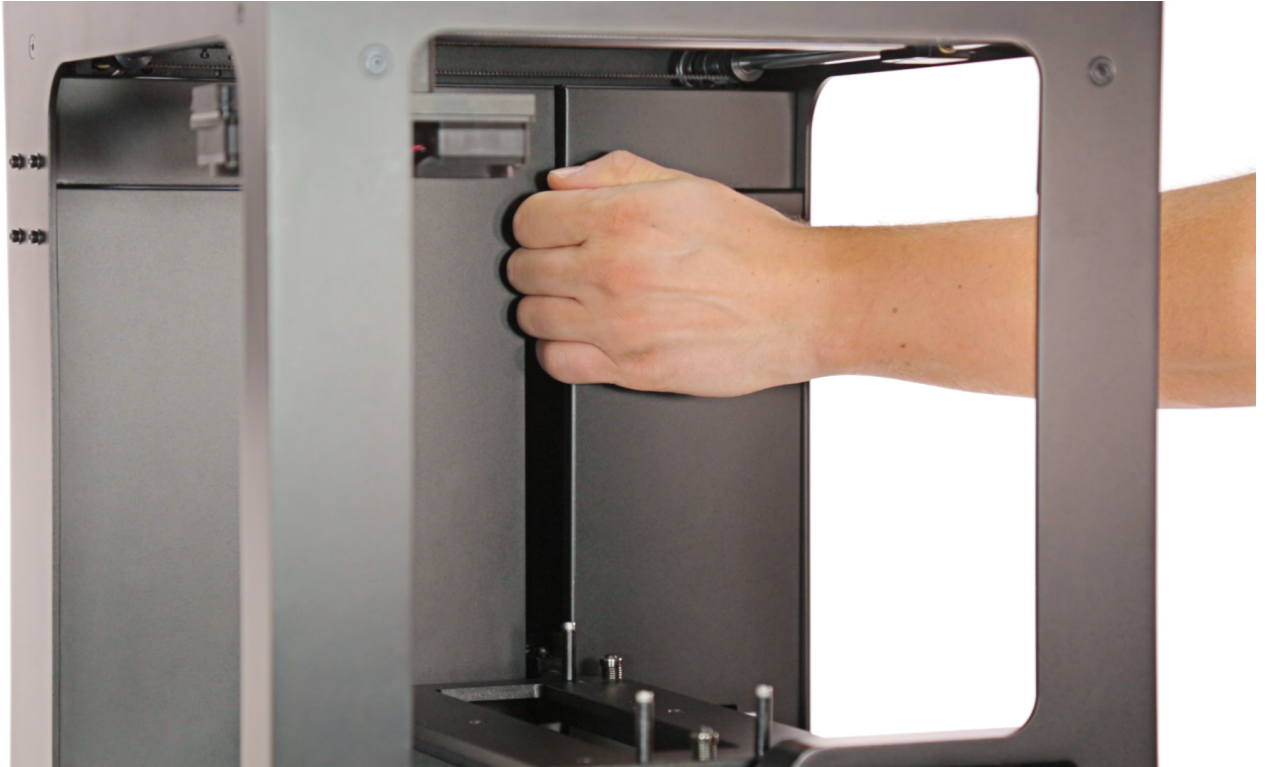


## Unscrewing the Z-Axis Cover, part 2



Unscrew the screw that secures one part of the Z-axis cover at the back of the printer.

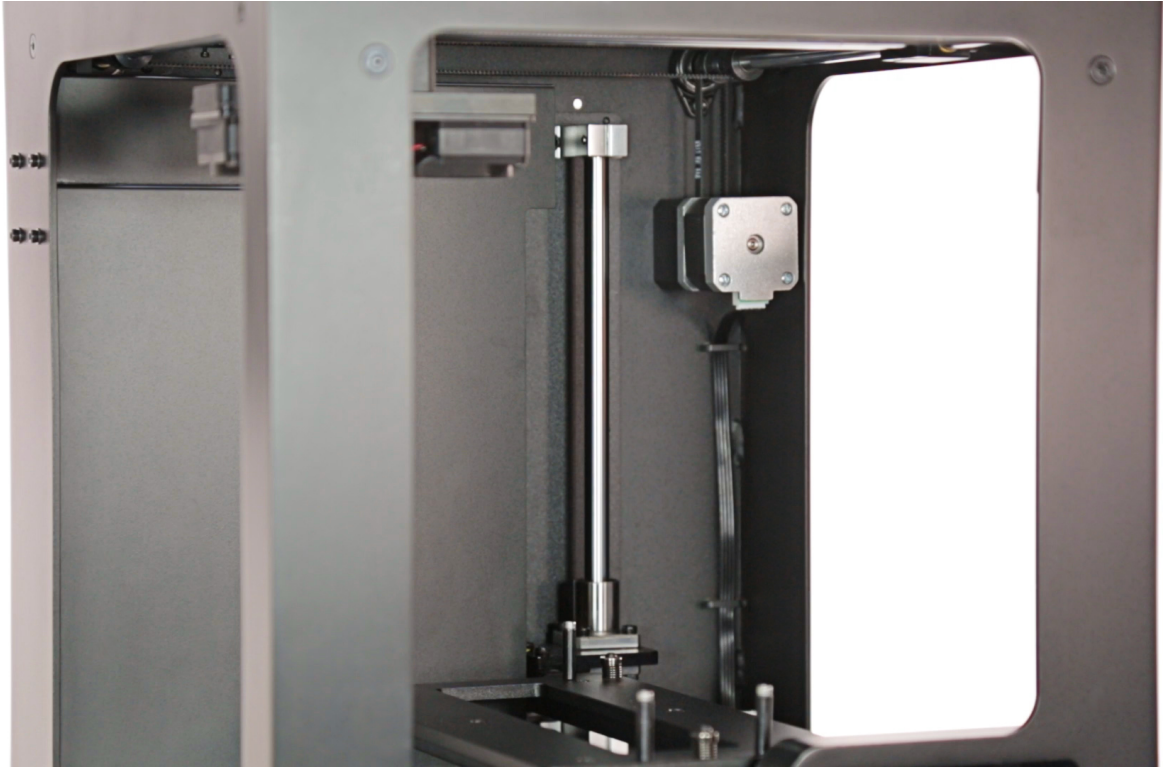
## Z-Axis Cover Removal



Remove the Z-axis cover from the printer.

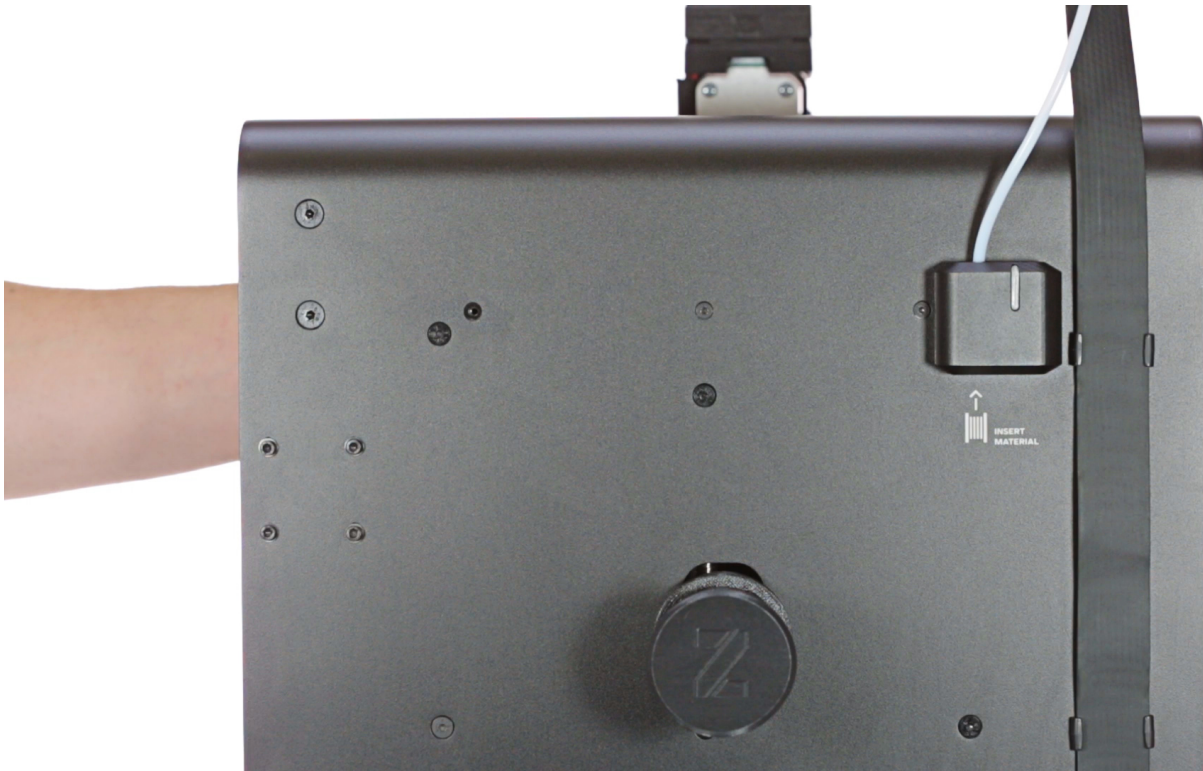


## Z-Axis Cover Installation



Install the Z-axis cover back in the printer.

## Securing the Z-Axis Cover, part 1



Secure the cover by fixing the screw at the back of the printer.

## Securing the Z-Axis Cover, part 2



Secure the cover by fixing the other screw inside the printer.

## Platform Installation



Place the heatbed cable behind the heatbed mount and install the platform back in the printer.

## Plugging the Heatbed Cable (into the Z-Axis Cover)



Plug the heatbed cable into the Z-axis cover.



## Plugging the Power Cable



Plug the power cable in.