

Hotend Replacement

SOURCE:

<https://support.zortrax.com/m200-plus-hotend-replacement/>

Table Of Contents

Unloading the Material
Unplugging the Power Cable
Hotend Removal
Heater and Thermocouple Removal
Heater and Thermocouple Assembly
Hotend Assembly
Plugging the Power Cable

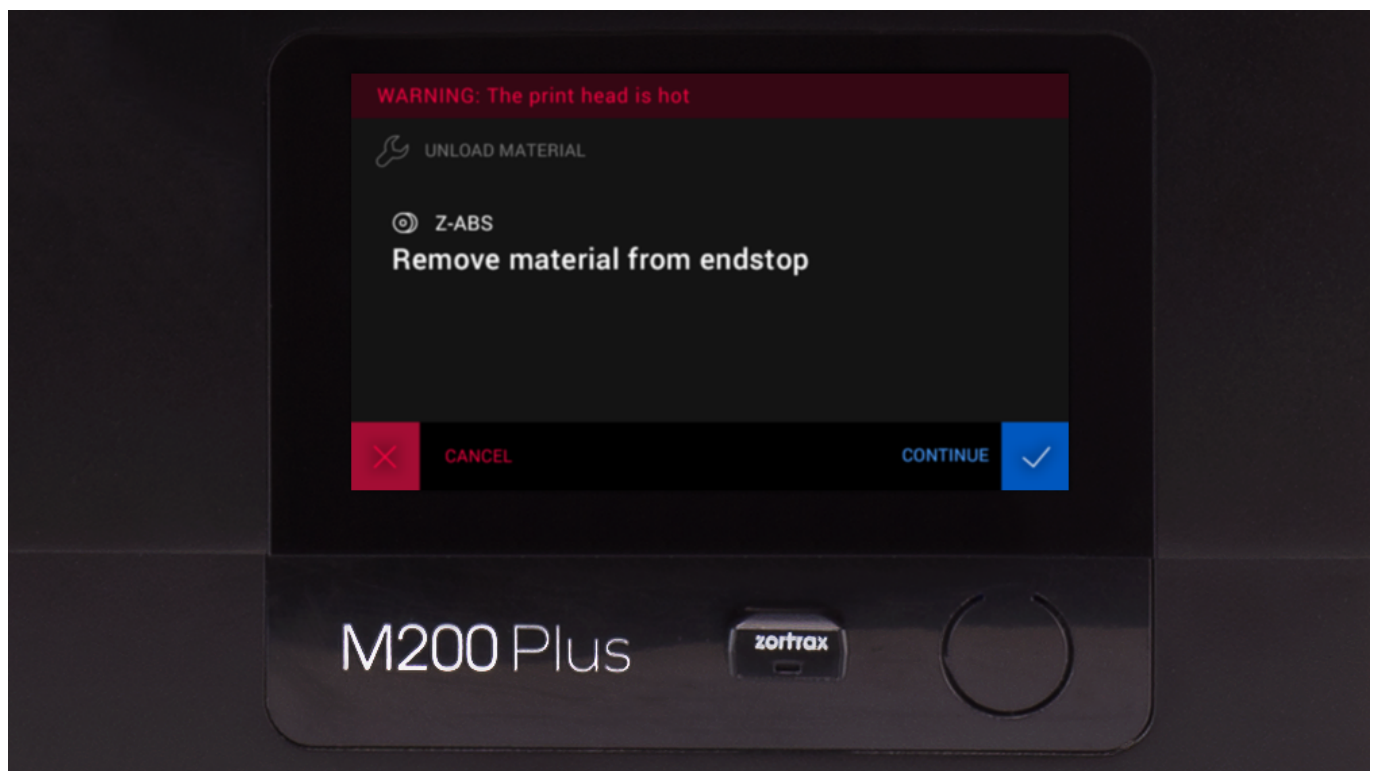
Unloading the Material

To unload the material, open the Tools menu and select “Material” and “Unload material.” Wait until the extruder heats up and select “Continue” to confirm.

To complete the procedure, remove the material from the endstop placed at the back of the printer.








WARNING: The print head is hot

 UNLOAD MATERIAL

 Z-ABS

Material unloading finished



CANCEL

DONE



M200 Plus

zortrax

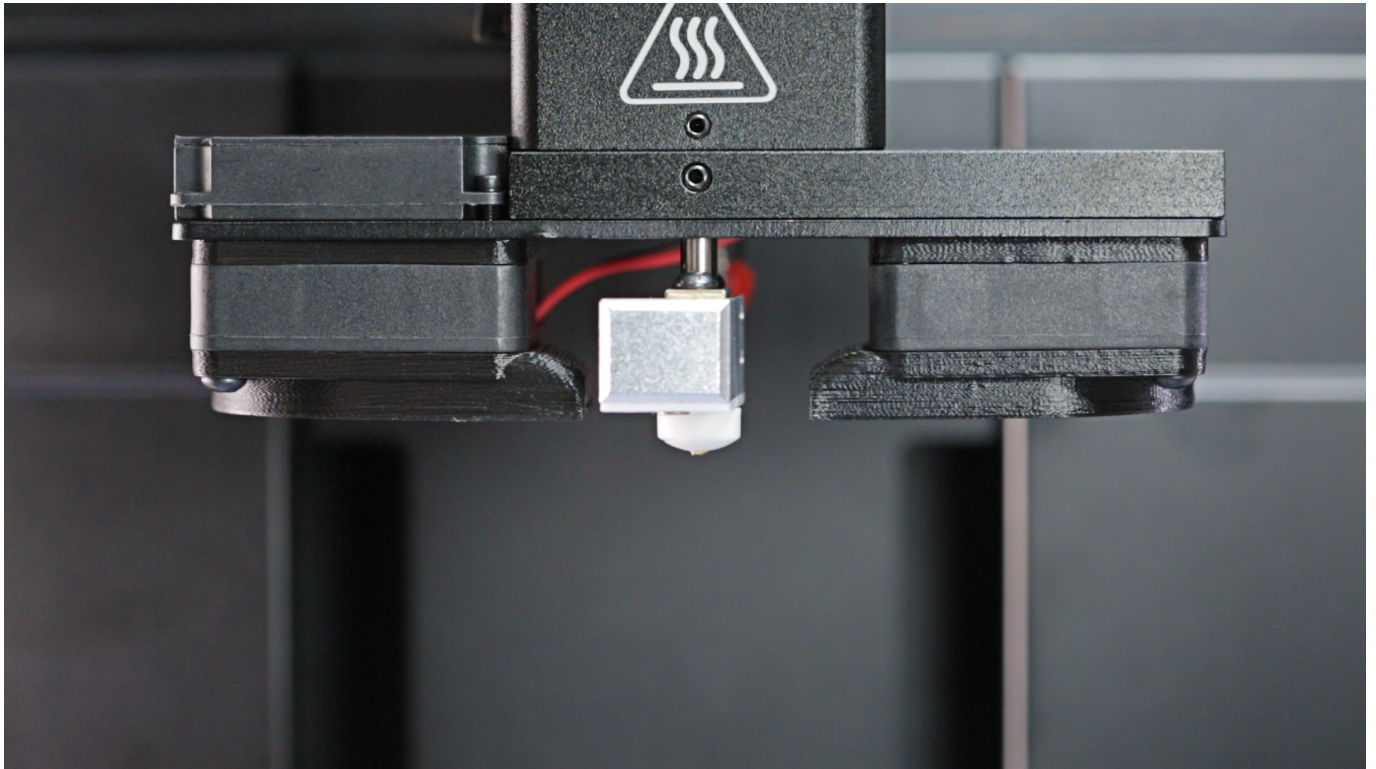
Unplugging the Power Cable



Turn off the printer and unplug the power cable.

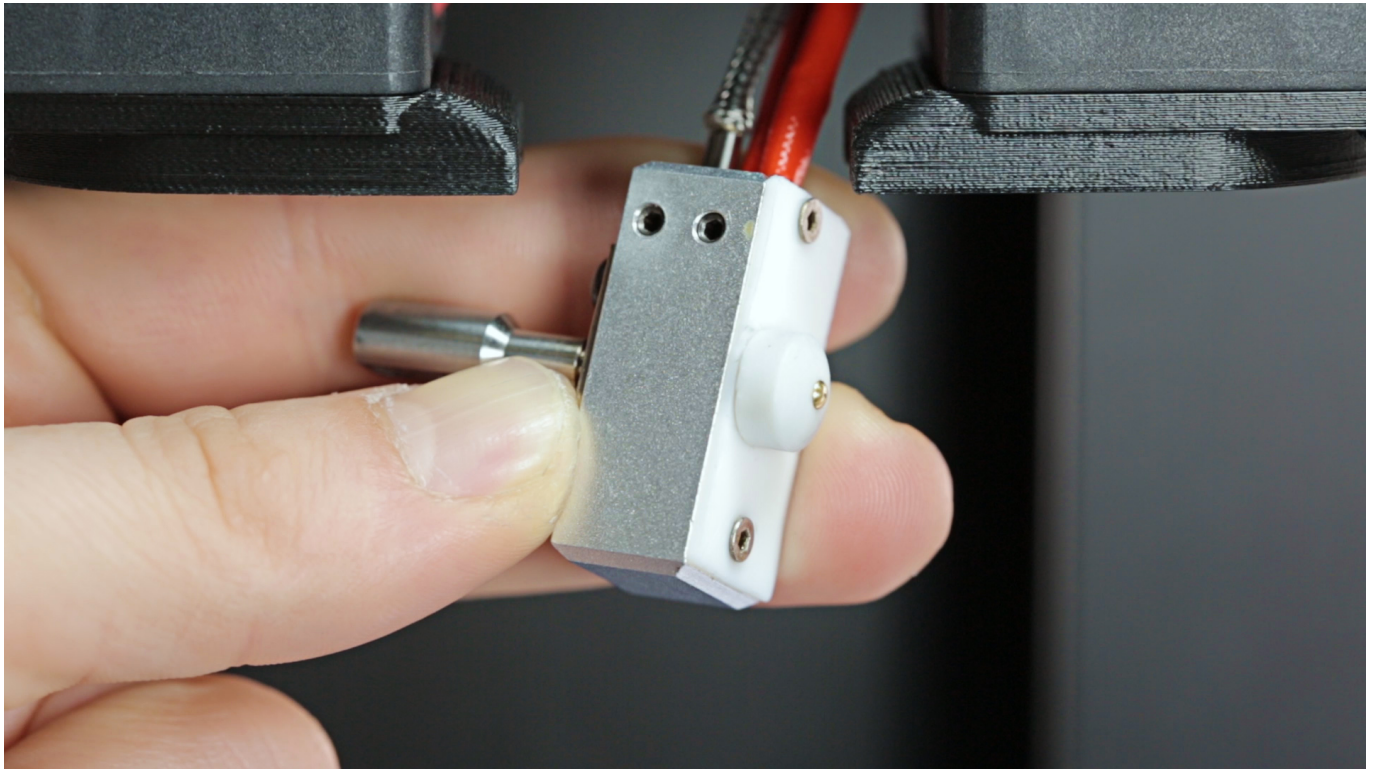
Wait until the printer – especially the hotend – cools down.

Hotend Removal



With a 1.5mm Allen key loosen the two screws that secure the hotend and remove the hotend from the extruder.

Heater and Thermocouple Removal



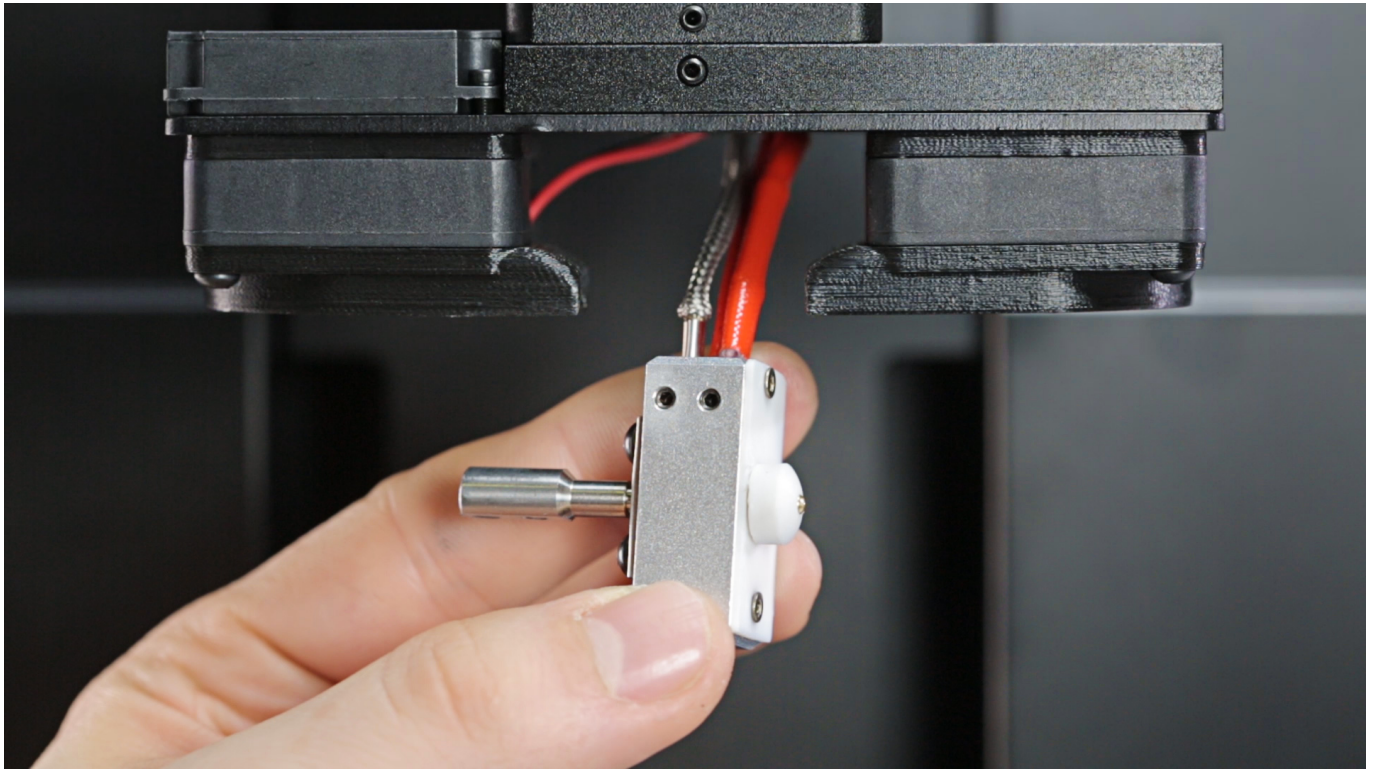
With a 1.5mm Allen key loosen the two screws that secure the heater and thermocouple in the hotend. Then remove both the heater and the thermocouple.

Heater and Thermocouple Assembly



Insert the heater and thermocouple into the new hotend and firmly tighten the two screws (using a 1.5mm Allen key).

Hotend Assembly



Insert the hotend into the extruder and tighten the two screws that secure it (using a 1.5mm Allen key).

Plugging the Power Cable



Plug the power cable in.