

# Endstop Sleeve Installation

SOURCE:

<https://support.zortrax.com/endstop-sleeve-installation/>

**Table Of Contents**

Unplugging the Power Cable  
Unplugging the Extruder Cable  
Loosening the Screws on the Axis Block  
Unscrewing the Axis Block Cover  
Endstop Sleeve Installation  
Securing the Axis Block Cover  
Tightening the Screws on the Axis Block  
Plugging the Extruder Cable  
Plugging the Power Cable

**The endstop sleeve is responsible for pressing the lever of the endstop once the extruder reaches the end of the axis. This action immediately informs the printer that the extruder should stop moving and not crash into the housing. Therefore, if the extruder keeps hitting a corner of the housing, and an error message appears on the display (Endstops error #034), check if the endstop sleeves are installed on each axis block. The sleeves should be attached to the inner side of the axis block. This manual gives instructions on the endstop sleeve installation. There is an endstop sleeve model available for [download](#) at the Zortrax Library.**

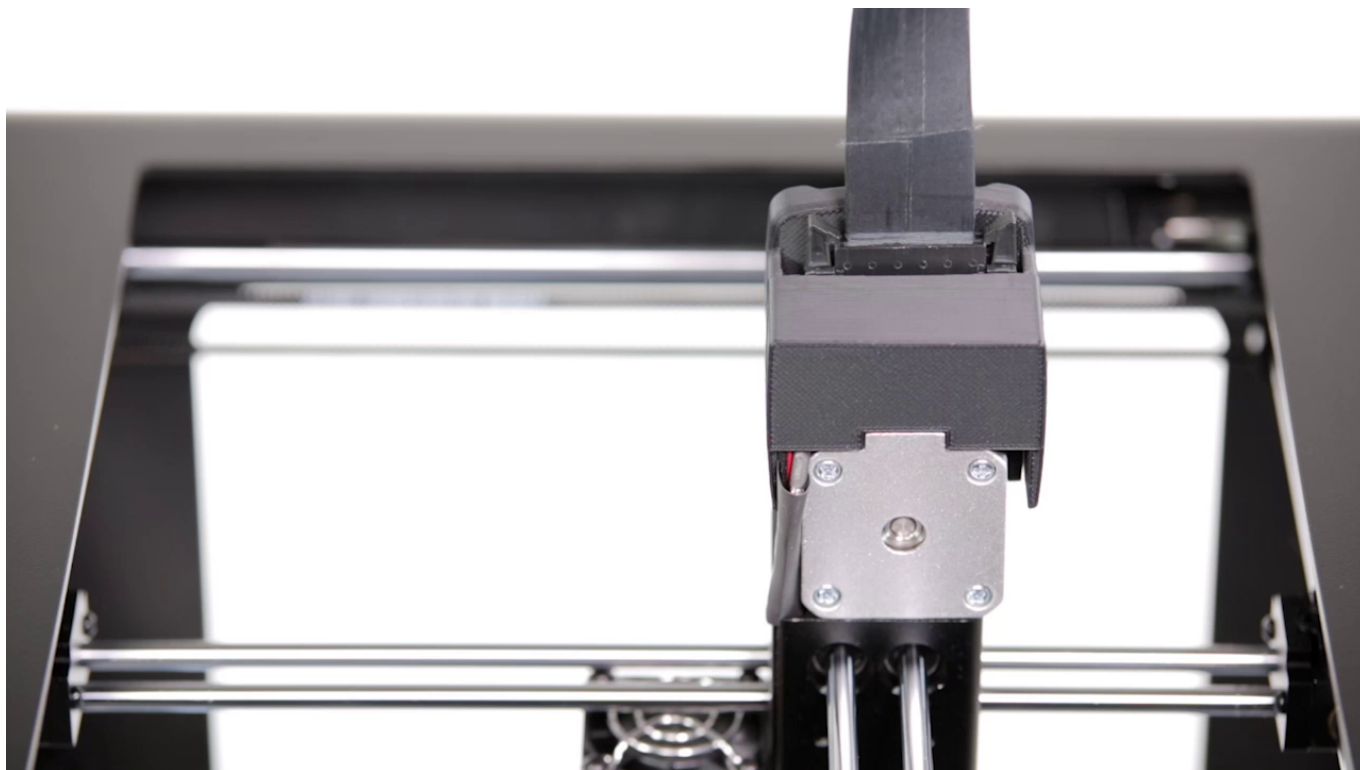
The following manual shows the M200 repair work. For the M300, M200 Plus and M300 Plus, these procedures are the same.

## Unplugging the Power Cable



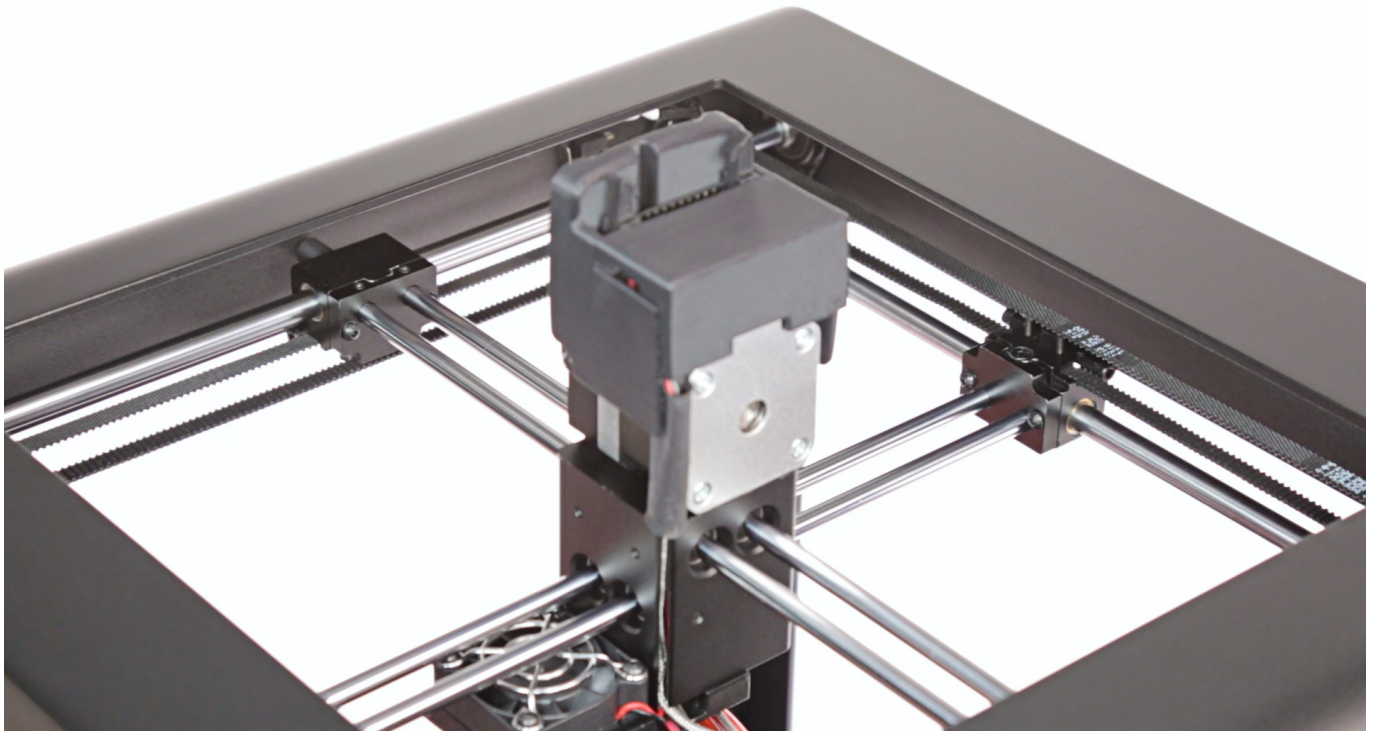
Turn off the printer and unplug the power cable.

## Unplugging the Extruder Cable



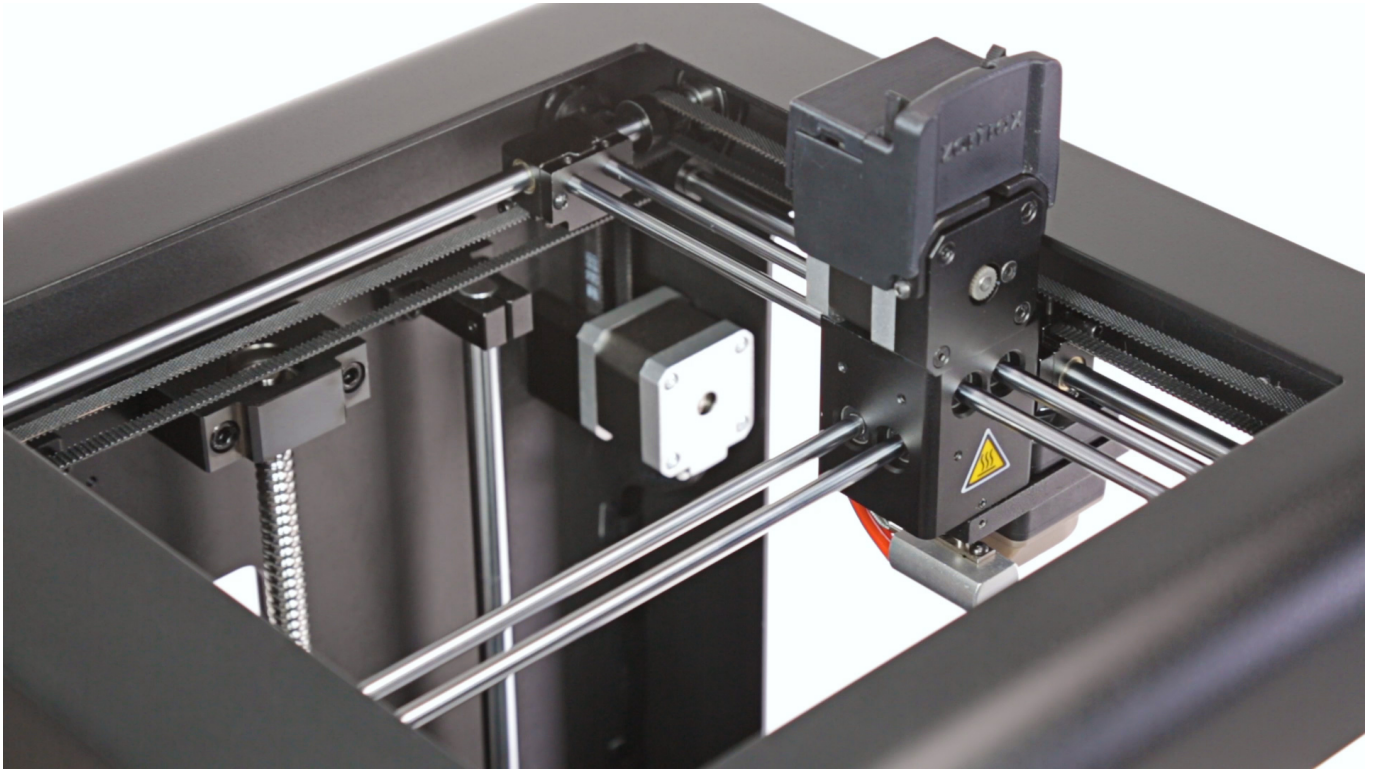
Unplug the extruder cable.

## Loosening the Screws on the Axis Block



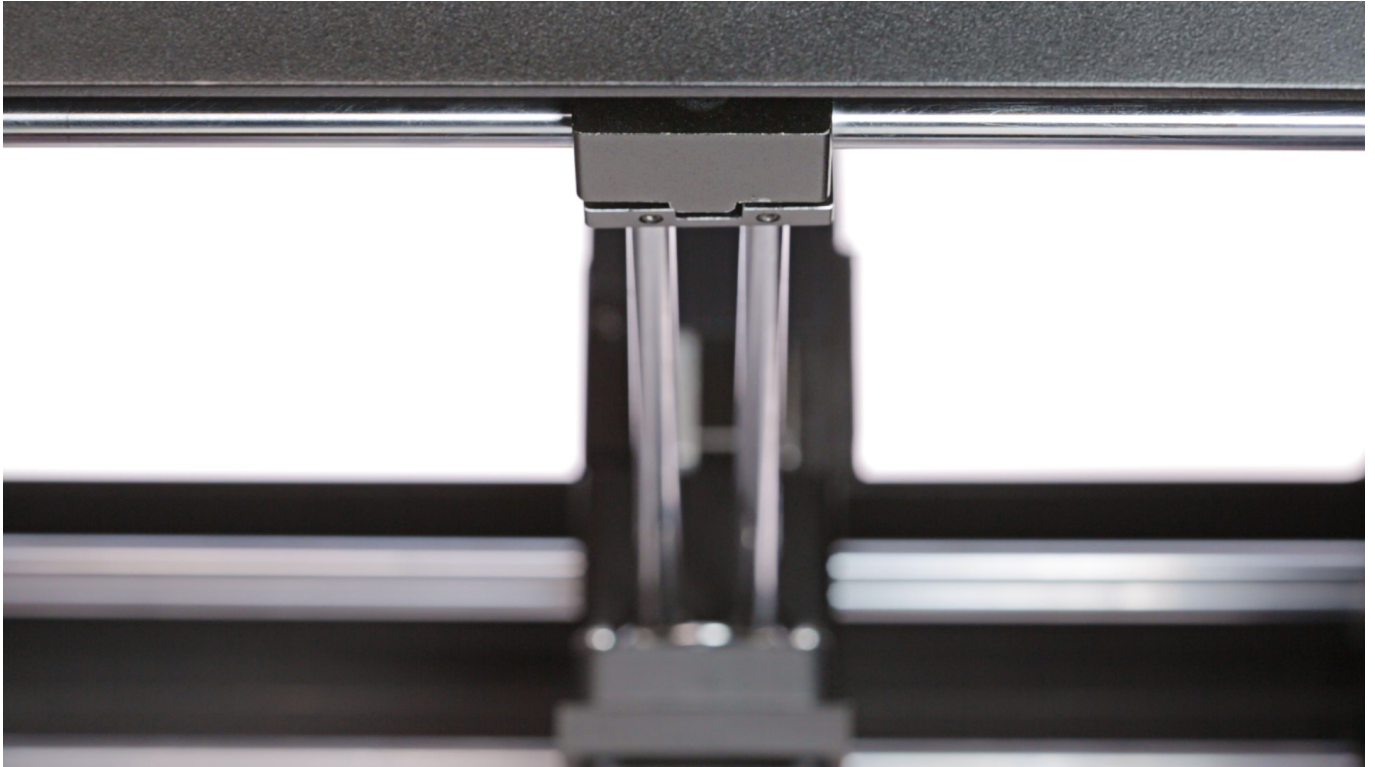
Move the extruder toward the axis block on which you will install the endstop sleeve. Loosen the two screws placed at the bottom of the opposite axis block using a 1.5mm Allen key.

## Unscrewing the Axis Block Cover



Move the extruder toward the opposite axis block. Unscrew the two front screws on the axis block on which you will install the endstop sleeve. Use a 2mm Allen key. Slightly move the axis block cover away from the block to gain easier access to the place where the endstop sleeve should be screwed in.

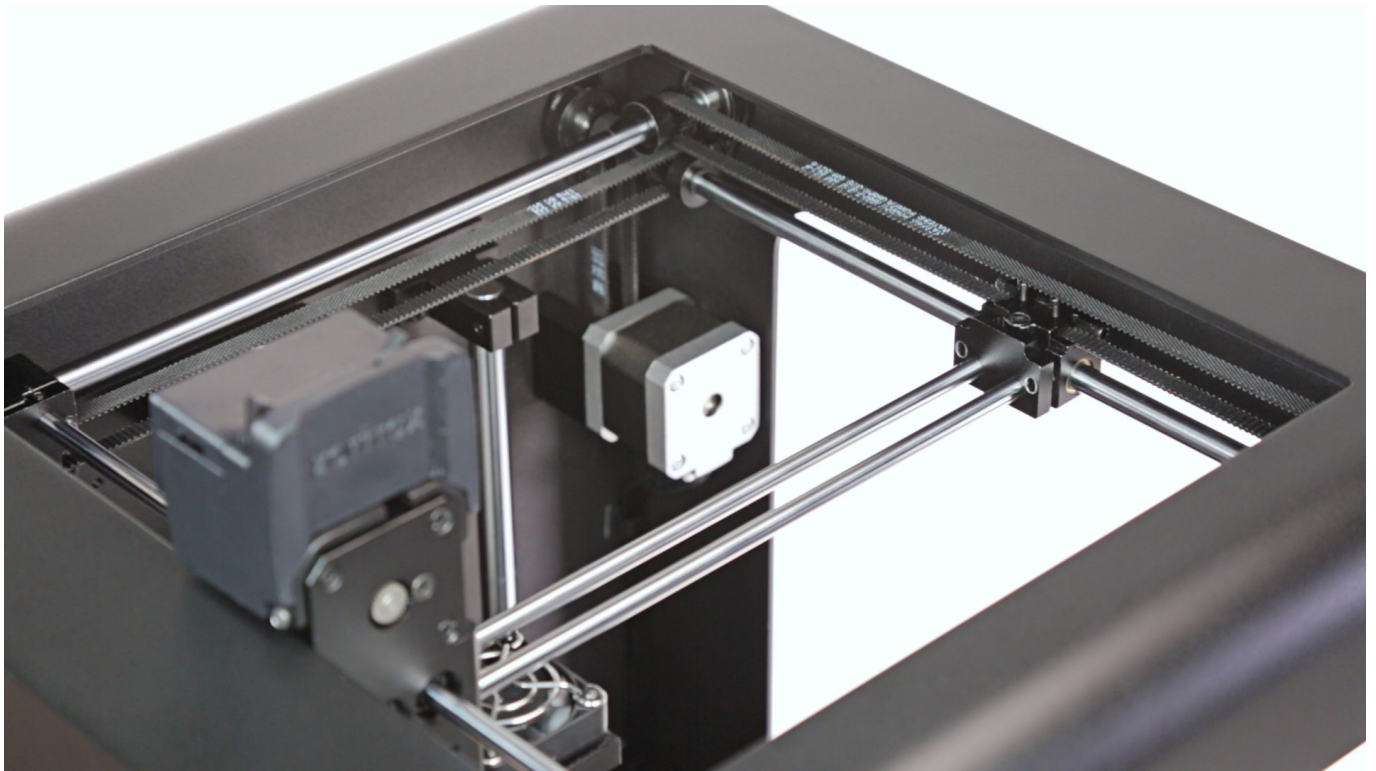
## Endstop Sleeve Installation



Turn the axis block and screw in the endstop sleeve using a 2mm Allen key. Turn the axis block to its previous position.

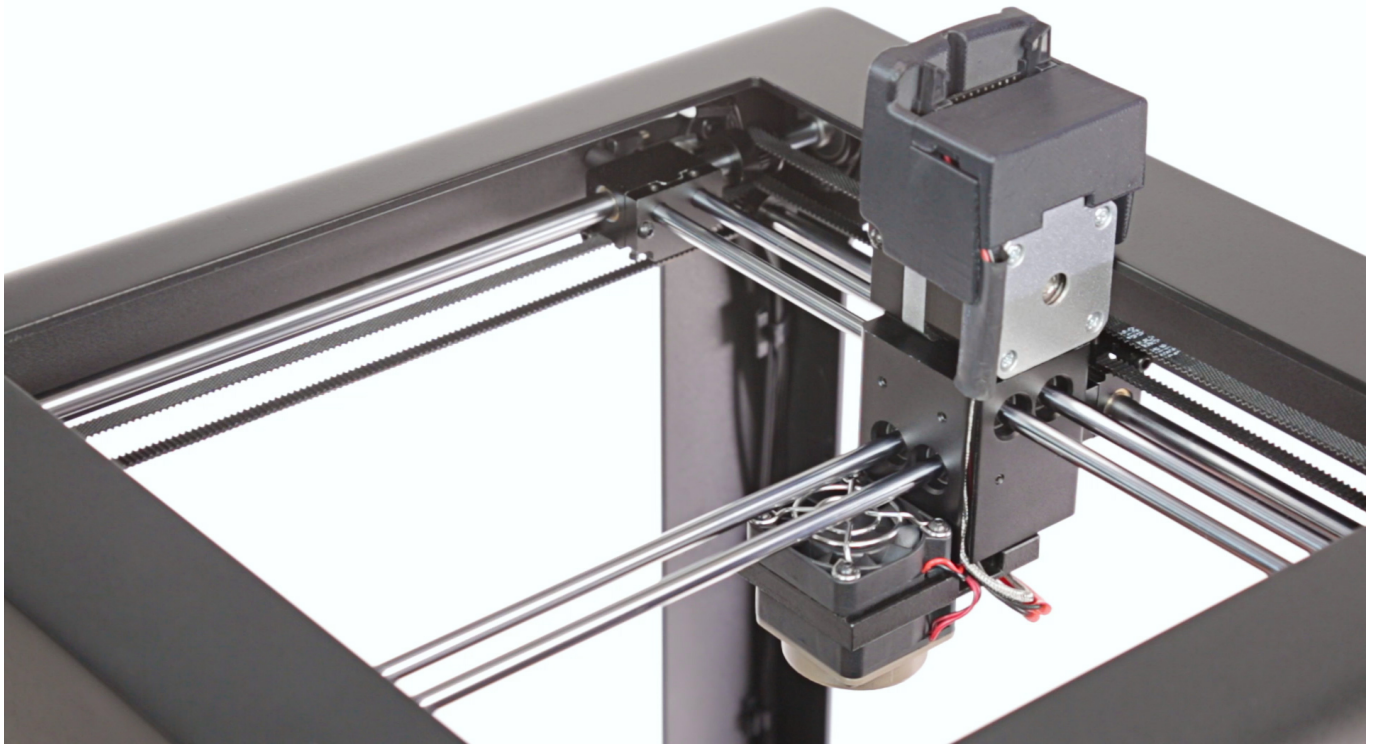


## Securing the Axis Block Cover



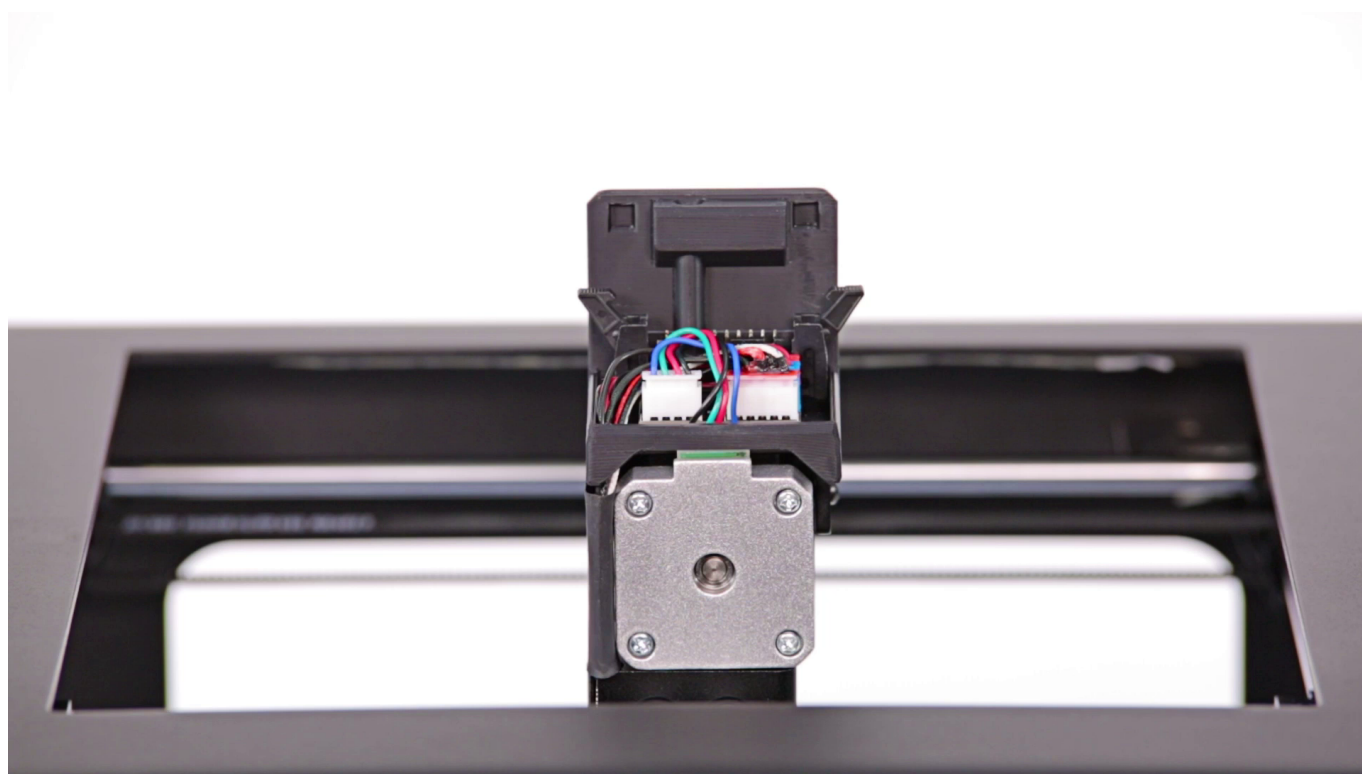
Push the axis block cover closer to the block and secure it with the two screws.

## Tightening the Screws on the Axis Block



Move the extruder toward the opposite axis block. Tighten the two screws placed at the bottom of the axis block using a 1.5mm Allen key.

## Plugging the Extruder Cable



Plug the extruder cable in.

## Plugging the Power Cable



Plug the power cable in.