

Unpacking & First Use

SOURCE:

<https://support.zortrax.com/inventure-unpacking-first-use/>

Table Of Contents

In the Box

Preparing the Printer for Work

Firmware Installation

Z-SUITE Installation

Cartridge Installation

First Print

In the Box



Zortrax Inventure
3D Printer



Build Tray
5 pcs.



Support Cartridge



Material Cartridge



Power Cable



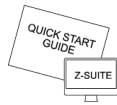
SD Card



Allen Wrench Set



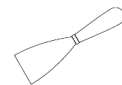
Nozzle Key &
Nozzle Needles



Z-Suite & Quick Start
Guides



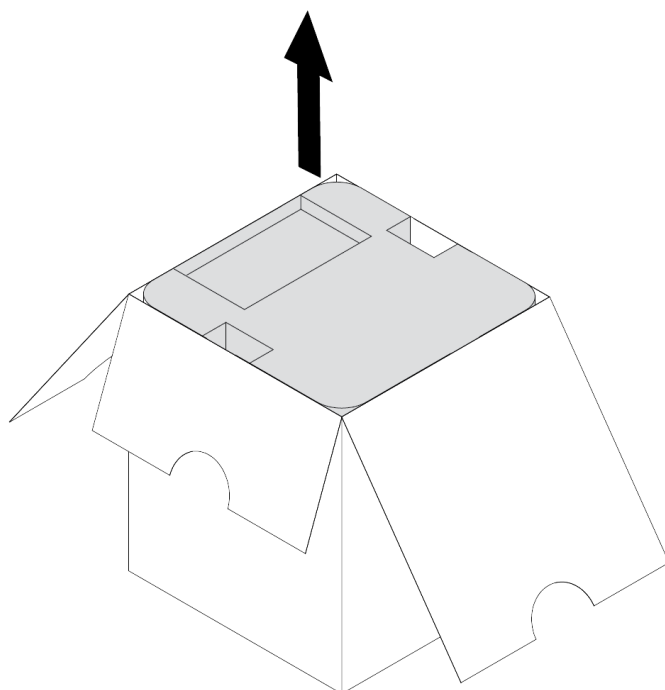
Tube of Service
Grease



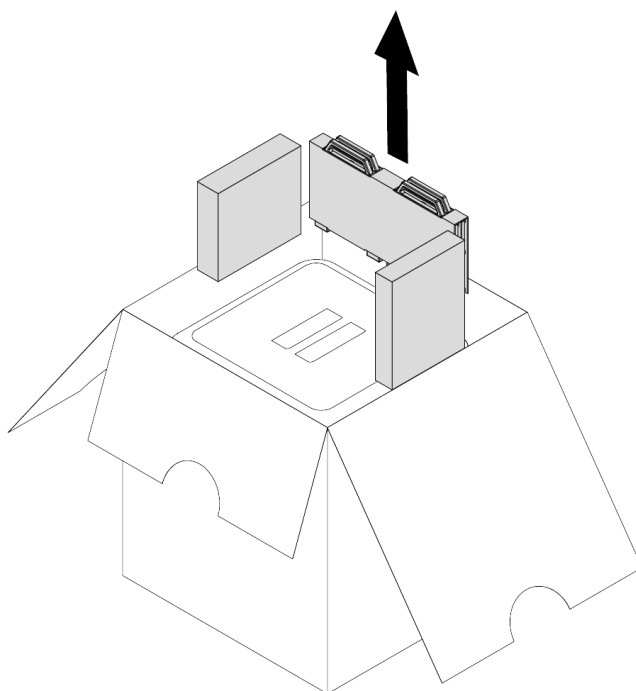
Spatula

The graphic shows the whole box content.

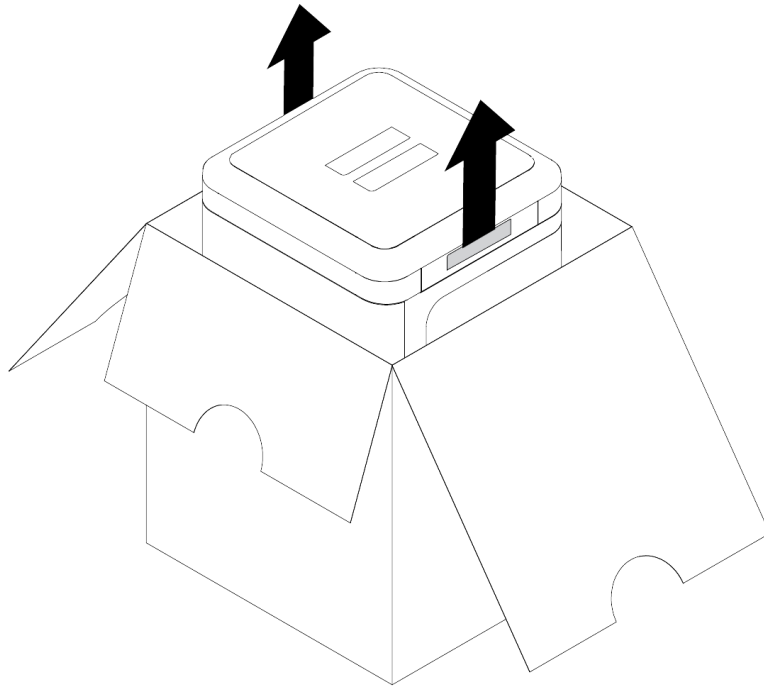
Preparing the Printer for Work



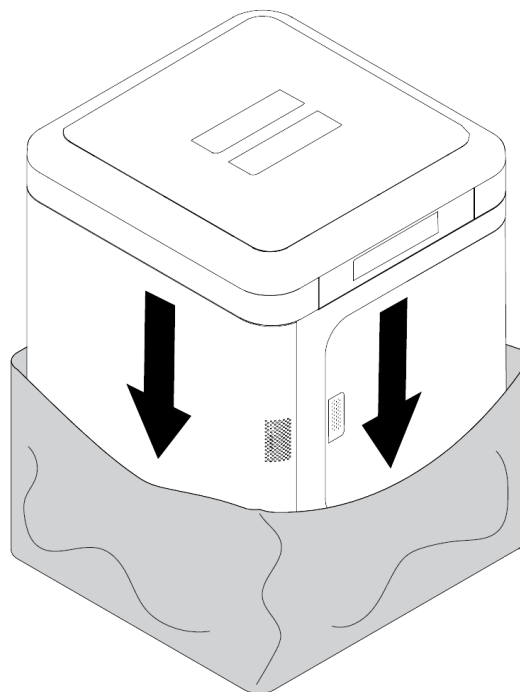
Open the box and remove the cushioning.



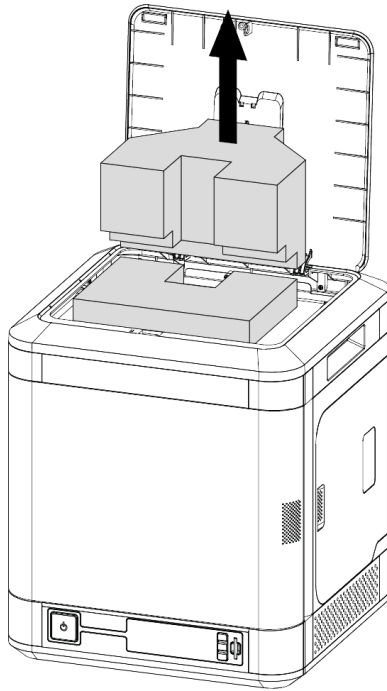
Remove the boxes with accessories.



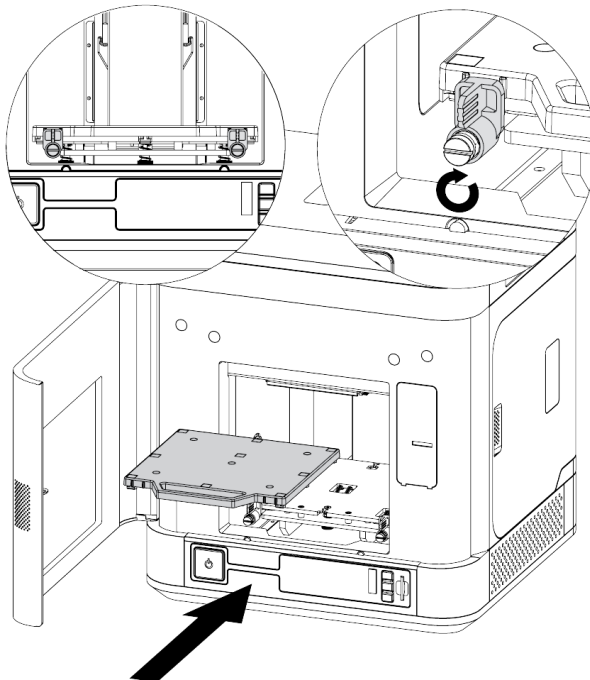
Use the handles to take the printer out of the box. The handles are on both sides of the housing.



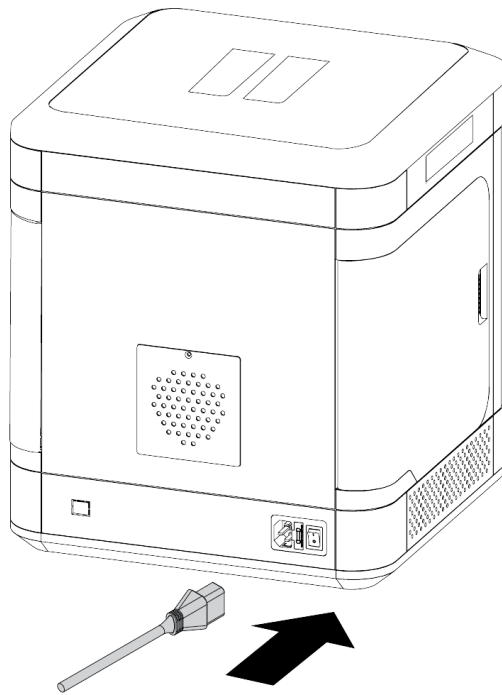
Remove the security foil.



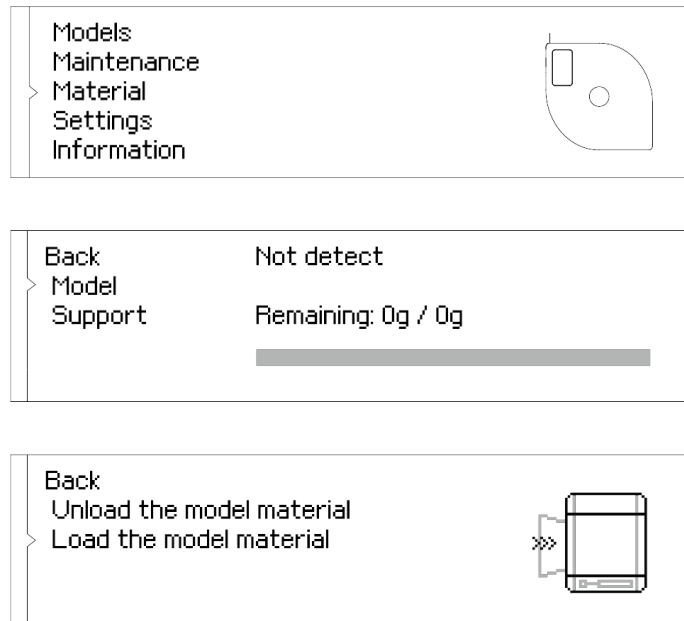
Open the top door and remove the plastic foams holding the extruder.



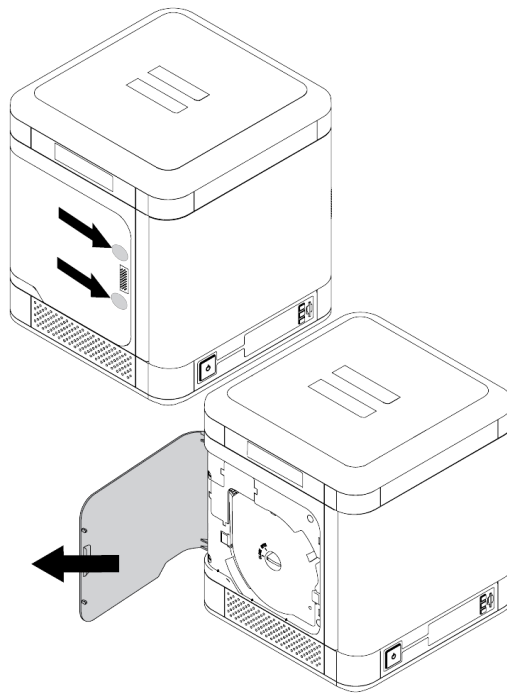
Insert the build tray into the printer and set the safety locks to the vertical position. Close the front door.



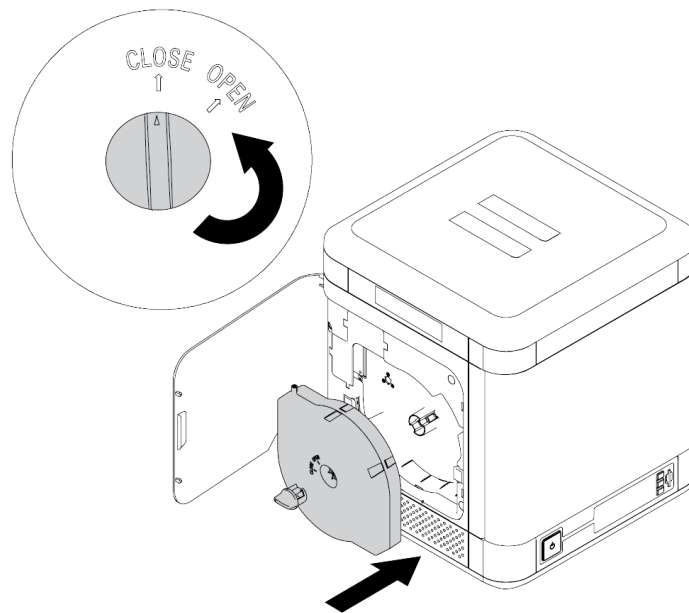
Plug in the power cable and turn on the printer.



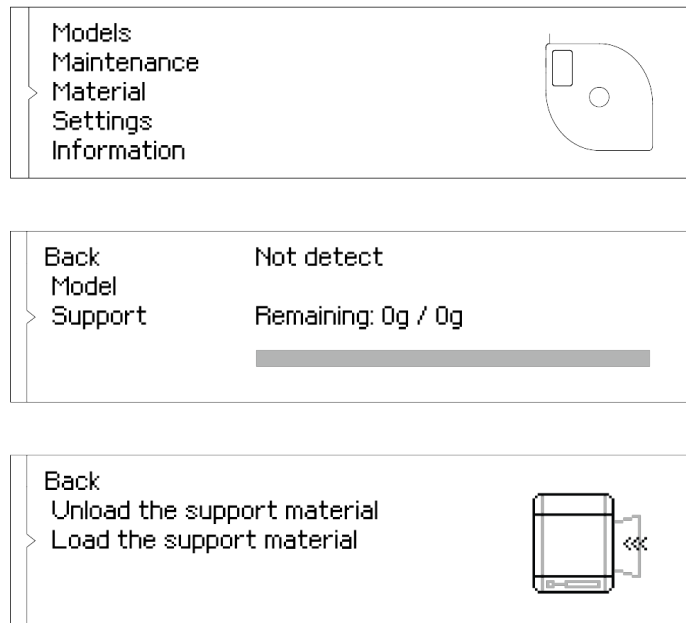
From the menu choose “Material,” then “Model” and “Load the model material.” Follow the instructions provided on the display.



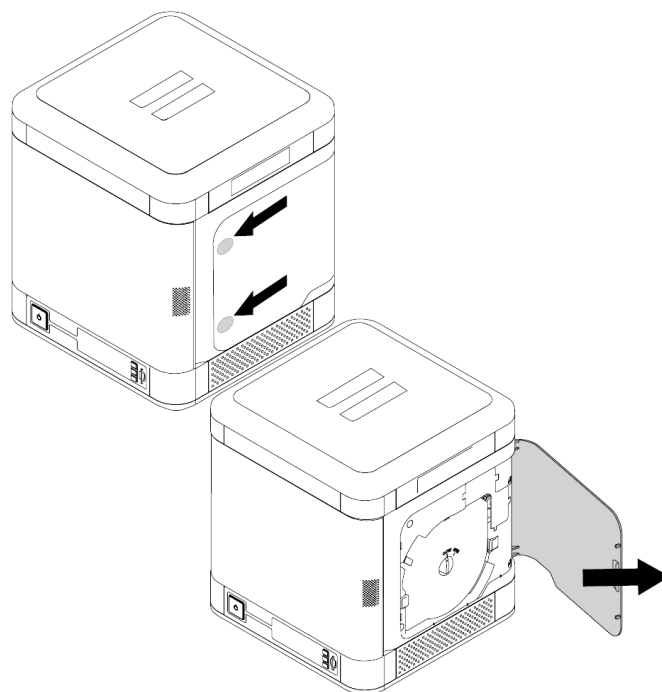
Open the left door by pressing the release buttons.



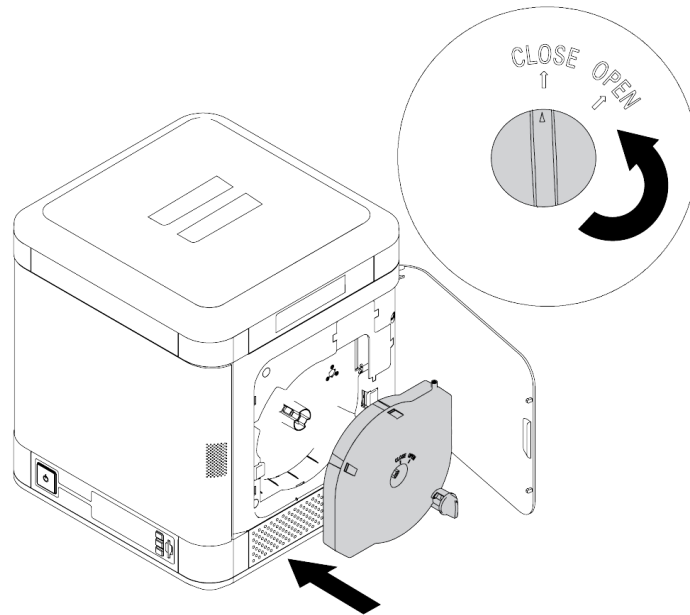
Insert the model material cartridge on the left side of the printer and turn the lock to **CLOSE**. Close the side door.



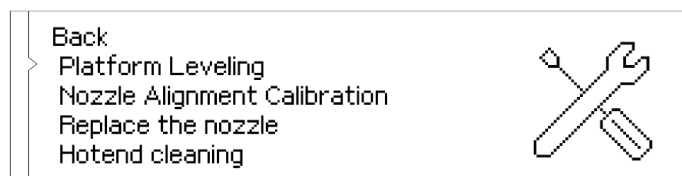
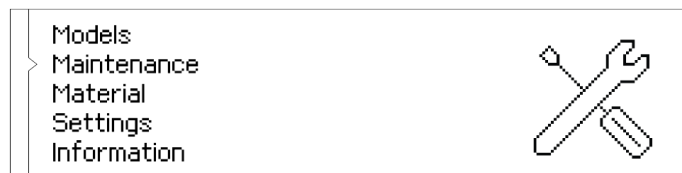
From the menu choose “Material,” then “Support” and “Load the support material.” Follow the instructions provided on the display.



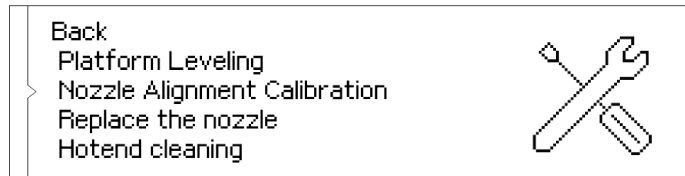
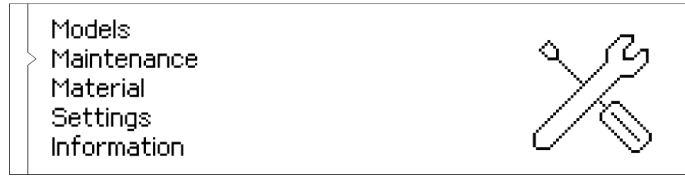
Open the right door by pressing the release buttons.



Insert the support material cartridge on the right side of the printer and turn the lock to CLOSE. Close the side door.



From the menu choose “Maintenance” and then “Platform Leveling.” Follow the instructions provided on the display.



From the menu choose “Maintenance” and then “Nozzle Alignment Calibration.” Follow the instructions provided on the display.

Firmware Installation

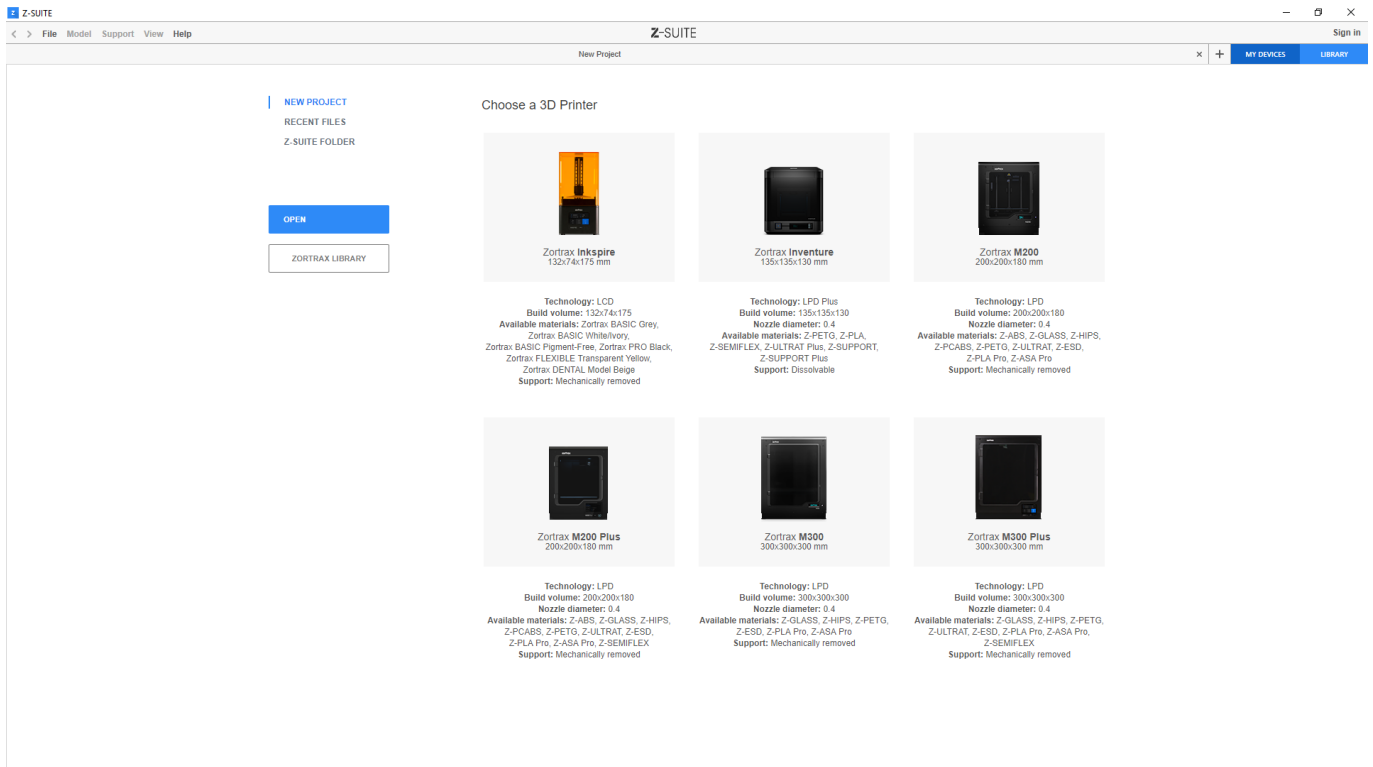
The Zortrax logo is centered within a black rectangular border. The word "zortrax" is written in a bold, lowercase, sans-serif font.

Download the latest update of firmware at Zortrax Support in the [Downloads](#) section.

To install the firmware, copy the InventureUpdate.bin file to an SD card, insert the card into the printer and turn on the machine.

The firmware updates automatically.

Z-SUITE Installation

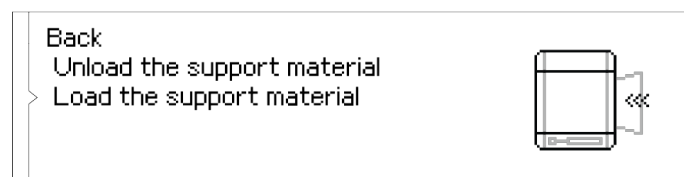
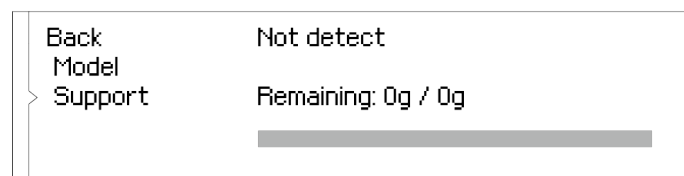
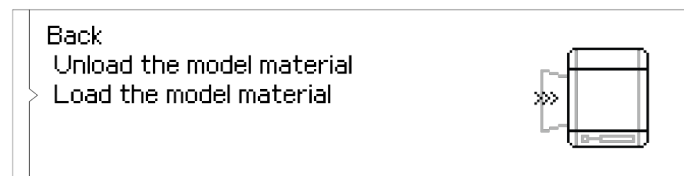
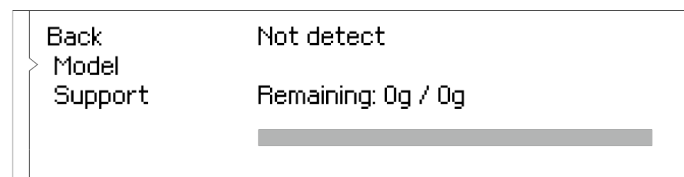
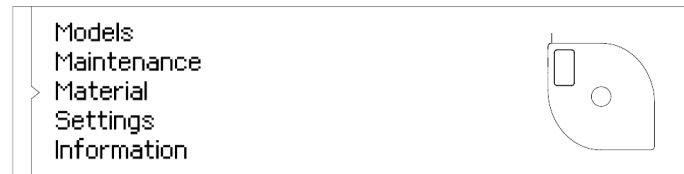


The latest Z-SUITE version can be found at Zortrax Support in the [Downloads](#) section.

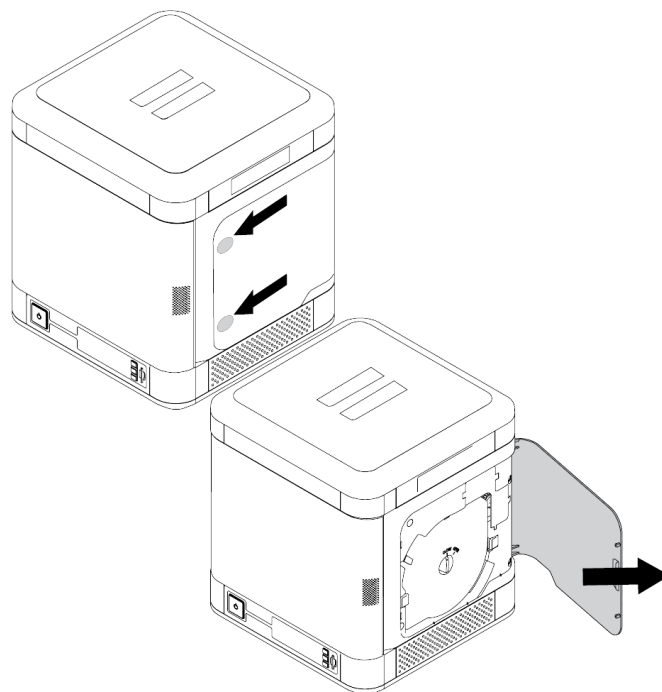
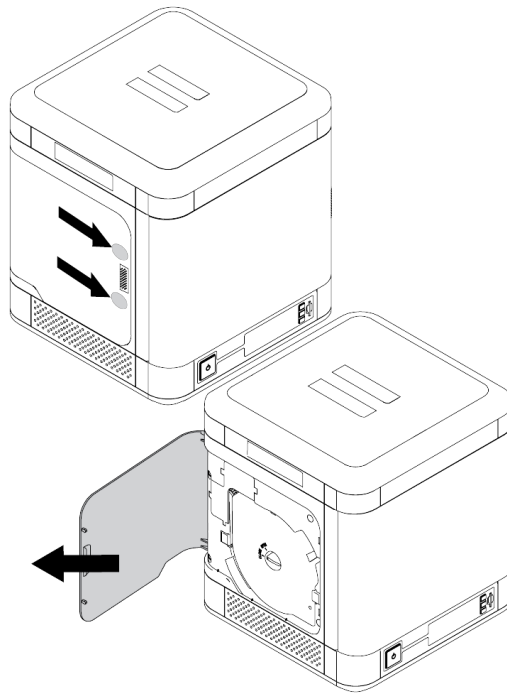
To download and install Z-SUITE, you can enter the serial number of your printer or your e-mail address. To find the serial number, go to "Information" tab in the menu and choose "Serial Number."

Cartridge Installation

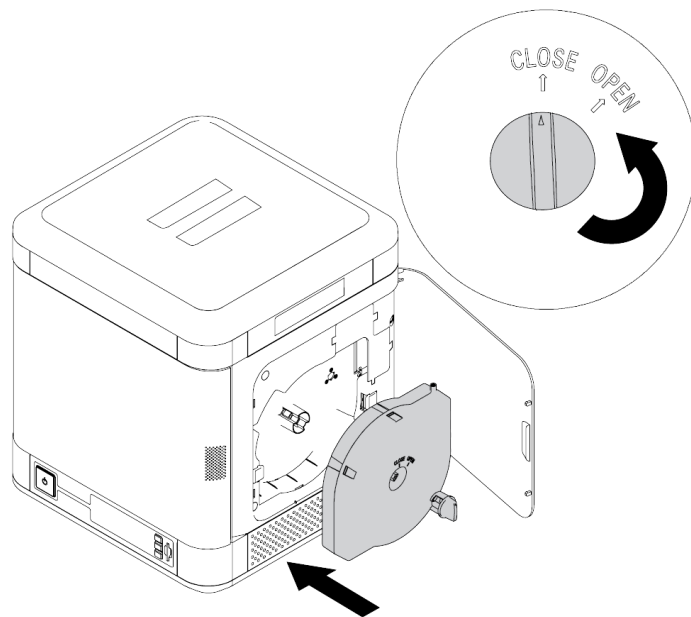
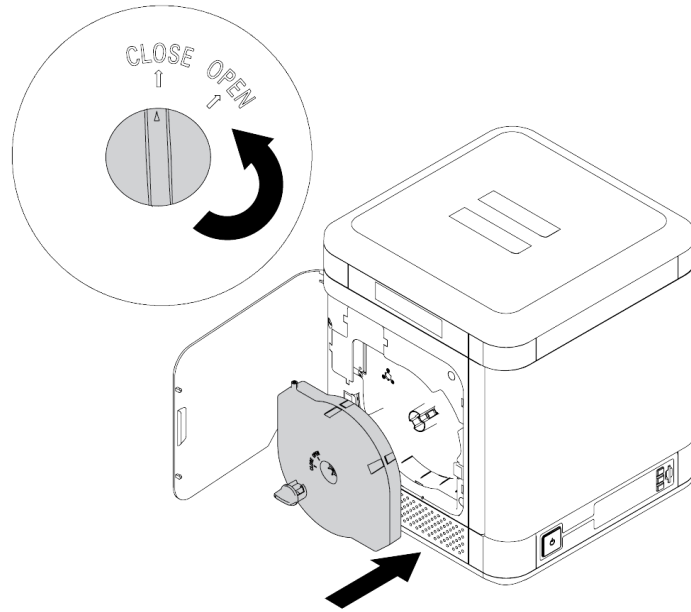
From the menu choose “Material,” then “Model/Support” and “Load the model/support material.”



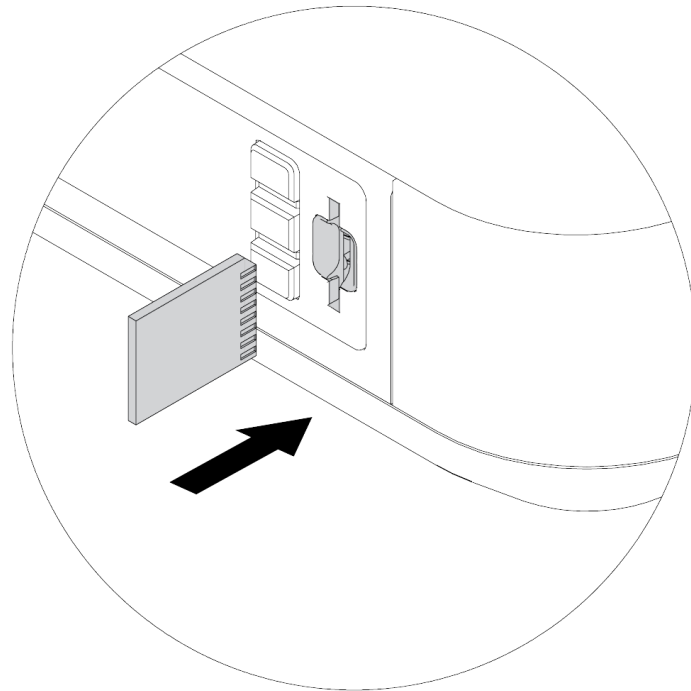
Open the side door by pressing the release buttons.



Insert the model material cartridge on the right side of the printer and the support material cartridge on the left side. Turn the lock to CLOSE and close the side door.



First Print



Insert the SD card into the slot. Your printer is now ready to print.



To choose the model for printing, select “Models” option from the main menu.

Select the model and confirm by pushing the button.

The printing procedure will begin automatically.

The display will show information about the extruder heating level. Once the heating is completed, the Inventure will start the printing process. The bar on the display will show the progress of the printing.

Do not leave the printer unattended during the pre-print calibration.